



West Yorkshire & Harrogate Local Maternity System

Improving Neonatal Care
6th November 2018

Hilary Farrow
Senior Midwife



LMS Team

Karen Poole
Programme Lead

Hilary Farrow
Senior Midwife
Safety, Neonates and
YAS

Sarah Bennett
Senior Midwife
Choice and Personalisation,
MVP, PMH

Emm Irving
Prevention
Manager for Public
Health

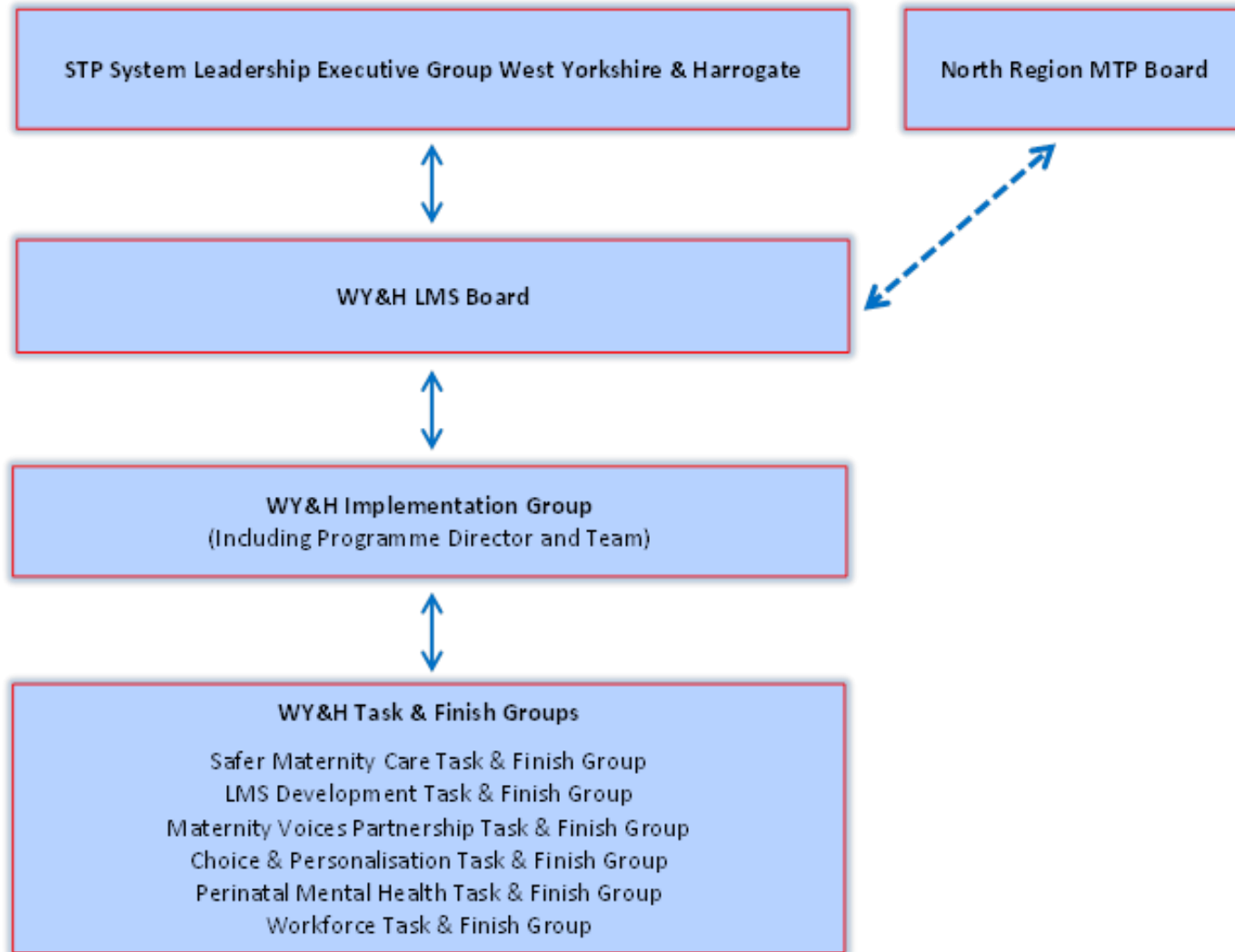
Sonya Ainley
Business Support

Jess Bower
Apprentice Admin
Support

Duncan Cooper
Analyst



Local Maternity System Governance



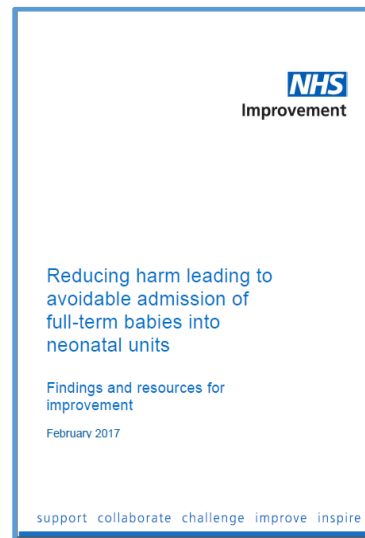
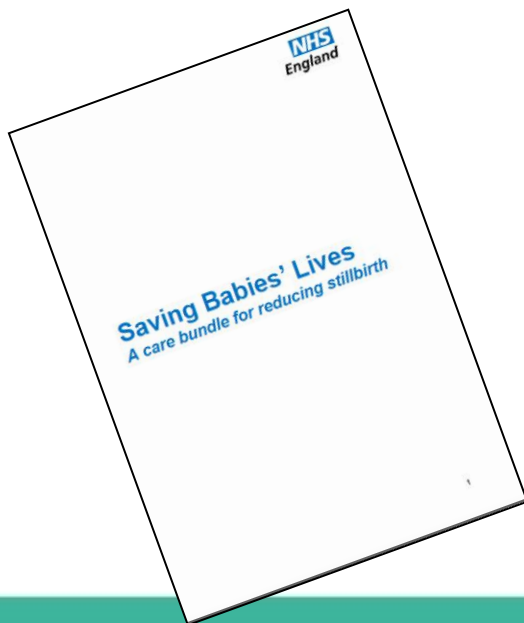
WY&H Workstreams

- Safer Maternity Care
 - Reduced Fetal Movement Sub-group
 - Safety Forum
 - Guidelines Group
 - Choice & Personalisation
 - Continuity of Carer
 - Maternity Voices Partnership
 - Workforce
 - Digitalisation
-
- Prevention
 - Postnatal Care
 - Perinatal Mental Health



Safer Maternity Care

- Neonatal priorities:
 - Saving Babies Lives
 - ATAIN – Avoiding Term Admissions into Neonatal Units
 - PReCePT – Preventing Cerebral Palsy in Preterm Labour
 - Awaiting ‘Better Newborn Care’



LMS Plan – Neonatal element

- Joint shared learning to improve perinatal outcomes
- LMS working collaboratively with the Neonatal ODN to improve outcomes for women, babies and families in WY&H
- Work with the Maternity Clinical Network to develop processes for exception reporting and review e.g. <27/40 born outside NICU
- Develop LMS wide Clinical Guidelines and Pathways
- Support Maternity and Neonatal Health Safety Collaborative
- Review Transitional Care facilities
- Work with Yorkshire Ambulance Services to improve Pre-hospital Maternity Care for women and babies



Neonatal Trajectories

Halve-it Campaign: 20% reduction by 2020
 50% reduction by 2025

- Stillbirths
- Neonatal Deaths
- Intrapartum brain injuries

Data Sources

Y&H Maternity Dashboard

Y&H Neonatal Dashboard

ONS

Maternity Services Dataset



Neonatal work so far.....

- Neonatal representation on LMS Board and LMS Implementation Group
- LMS representation on Neonatal ODN Executive Board
- LMS Maternity Services Survey undertaken, including benchmarking neonatal care
- Links with data analysts
- Established a Safety Forum for shared learning for top 5 incidents reported e.g. ATAIN
- Support MatNeo work
- Recruited LMS PReCePT Support Midwife
- Held PReCePT workshop and commenced implementation 3/12



Next Steps

- Continue to work with the Neonatal ODN
- Review LMS Plan: Neonatal section
- Await publication of Better Newborn Care
 - Develop an LMS Action Plan
- Await publication of Saving Babies Lives v2
 - Gap analysis and an LMS action plan
- Assess progress against trajectories
- Implement PReCePT and support improvement in preterm births
- Improve antenatal steroid administration – consider exception reporting process
- Contribute to reviewing Non-NICU born <27/40 exception reporting. Develop an action plan where required
- Consider any LMS Guidelines required





Any questions??

Any omissions??



Contacts

Hilary Farrow

hilary.farrow@wakefieldccg.nhs.uk

Visit: www.wyhpartnership.co.uk

Follow us [@wyhpartnership](https://twitter.com/wyhpartnership)

Read our [public summary plan](#)

Watch our [film](#)

