

May 2016

# West Midlands Neonatal Transfer Service



## In May 2016 WMNTS performed:

127 Overall Transfers  
 74 SWMMNN Transfers  
 29 SSBCNMN Transfers  
 4 CENTRE Transfers  
 13 Outside Transfers

76% of all SWMMNN transfers requested in May were performed

73% of all SSBCNMN transfers requested in May were performed

44% of all CENTRE transfers requested in May were performed

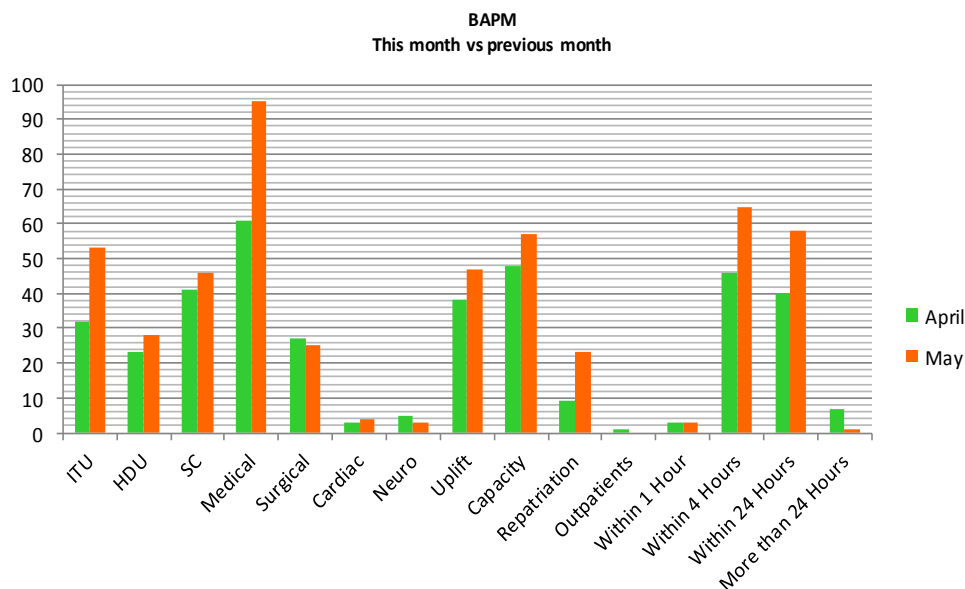
52% of all Outside transfers requested in May were performed

173 Transfers were requested. Of the 67 transfers NOT performed 9 were due to WMNTS reasons

## Let's Compare

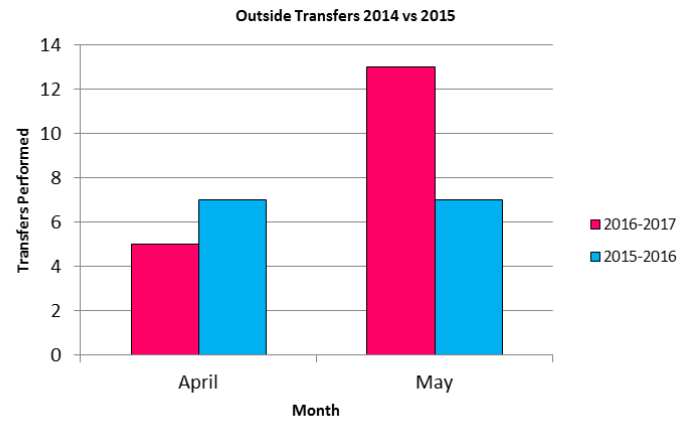
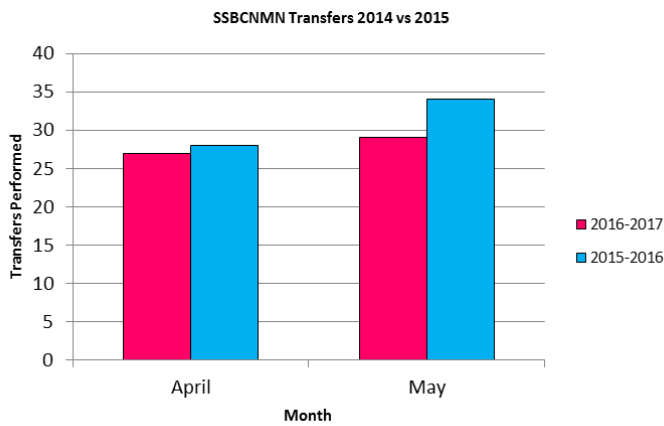
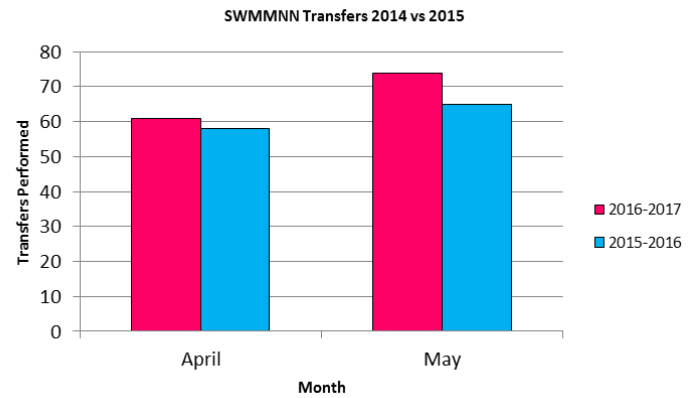
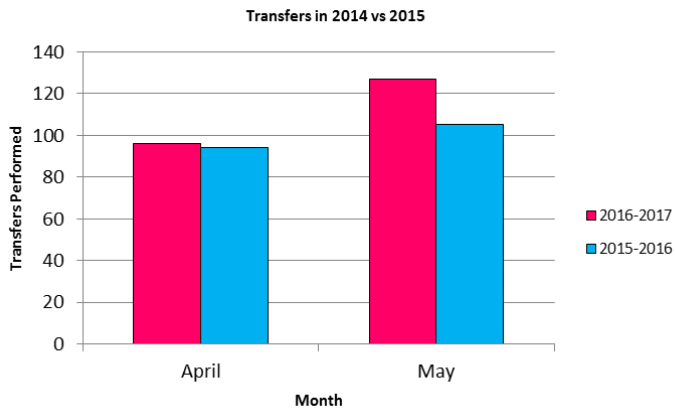
Figures marked in green show an improvement, orange no change and those in red show a decline

	Previous Month	Previous Year
Transfers requested	118	126
Transfers performed	96	106
SWMMNN Performed	87%	90%
SSBCNMN Performed	73%	83%
CENTRE Performed	65%	0%
Outside Performed	83%	64%



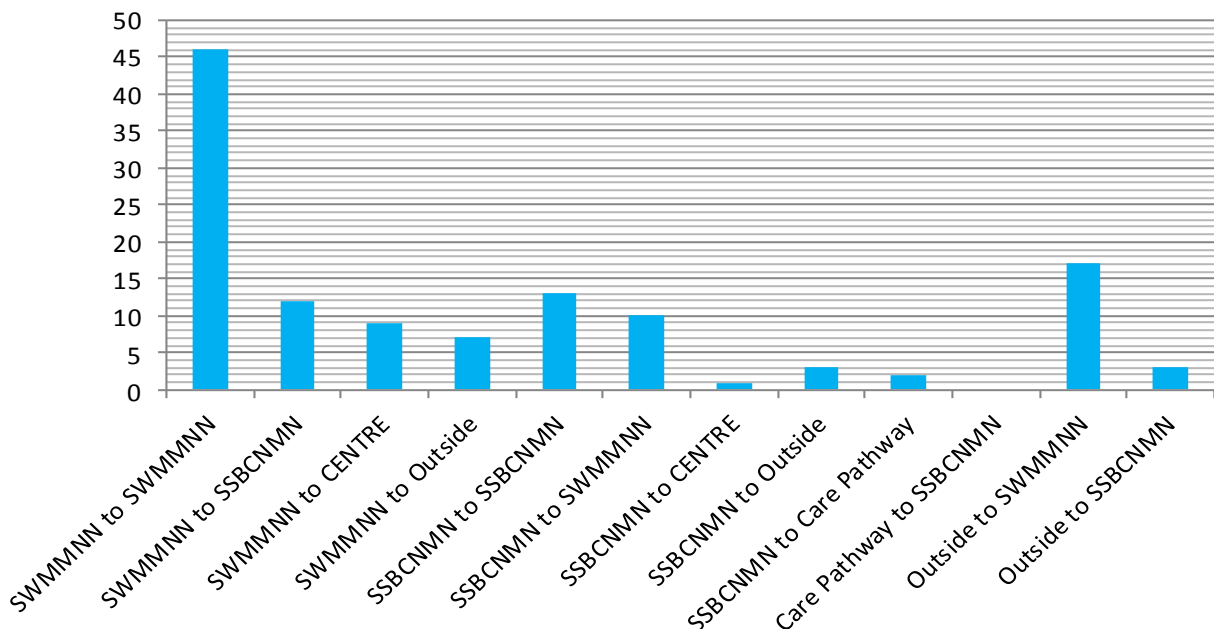
May 2016

# West Midlands Neonatal Transfer Service



## Which network are transfers going to and from?

■ May Transfers



May 2016

# West Midlands Neonatal Transfer Service



## Incidents this Month

Type of Incident	Risk Level	Incident Description
<i>Equipment</i>	Low	Evidence of gas leak on axillary gas cylinder

## Staffing

Staffing	Nurses Band 6	Transport SpR (Deanery)	Nurse Consultant Band 8b	Administrator Band 4	ANNP Band 8b	ANNP Band 8a	Transport Consultant
	10 (7.9 WTE)	1	1	1	4 (WTE 4)	2 (WTE 2)	1.5

Additional Notes: