

April 2016

West Midlands Neonatal Transfer Service



In April 2016 WMNTS performed:

- 96 Overall Transfers
- 61 SWMMNN Transfers
- 27 SSBCNMN Transfers
- 3 CENTRE Transfers
- 5 Outside Transfers

87% of all SWMMNN transfers requested in April were performed

73% of all SSBCNMN transfers requested in April were performed

65% of all CENTRE transfers requested in April were performed

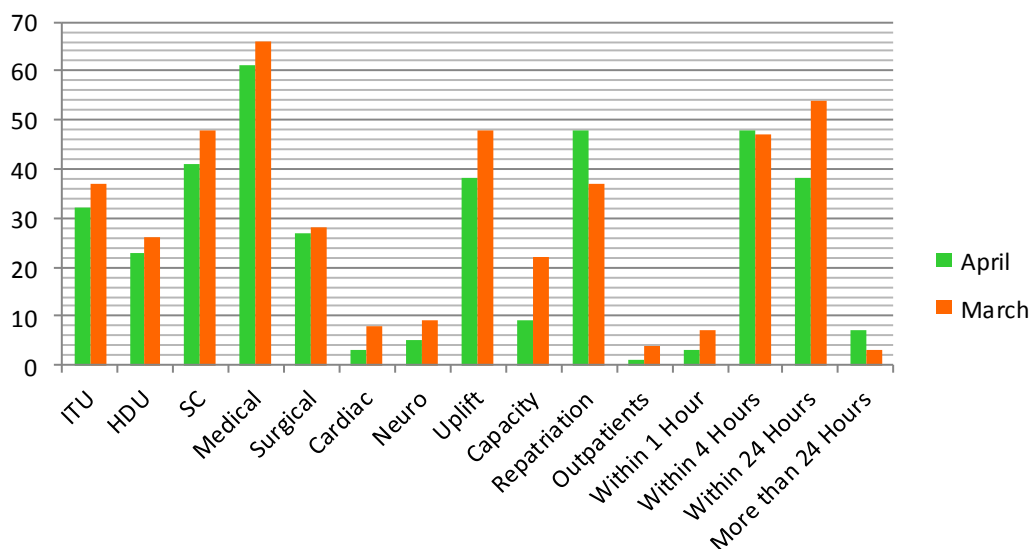
83% of all Outside transfers requested in April were performed

118 Transfers were requested. Of the 22 transfers NOT performed 1 was due to WMNTS reasons

Let's Compare Figures marked in green show an improvement, orange no change and those in red show a decline

	Previous Month	Previous Year
Transfers requested	130	112
Transfers performed	115	94
SWMMNN Performed	88%	85%
SSBCNMN Performed	92%	82%
CENTRE Performed	100%	100%
Outside Performed	60%	77%

BAPM
This month vs previous month

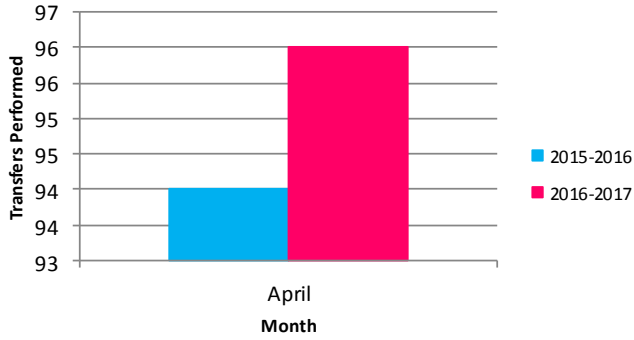


April 2016

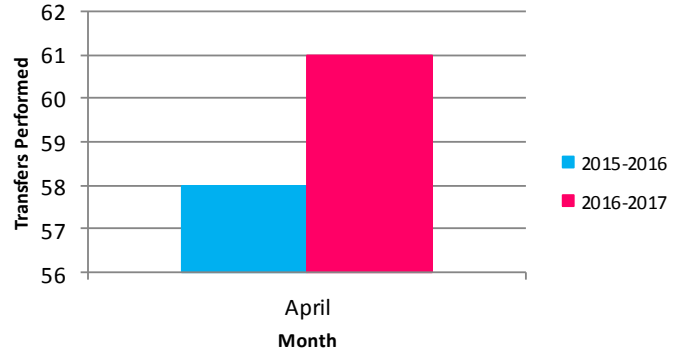
West Midlands Neonatal Transfer Service



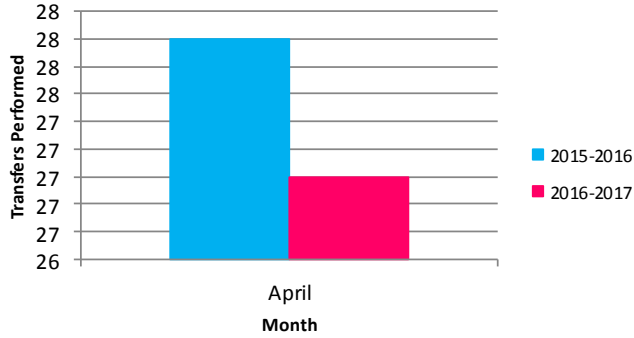
Transfers in 2015 vs 2016



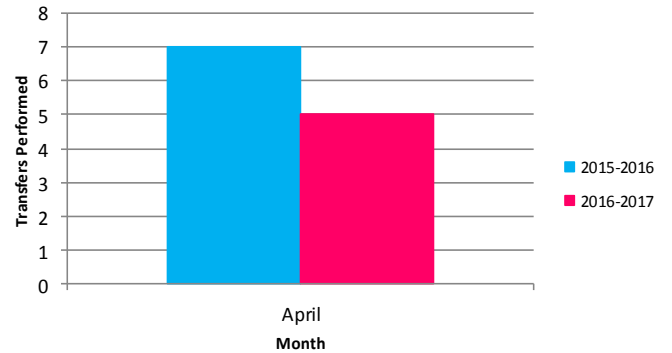
SWMMN Transfers 2015 vs 2016



SSBCNMN Transfers 2015 vs 2016

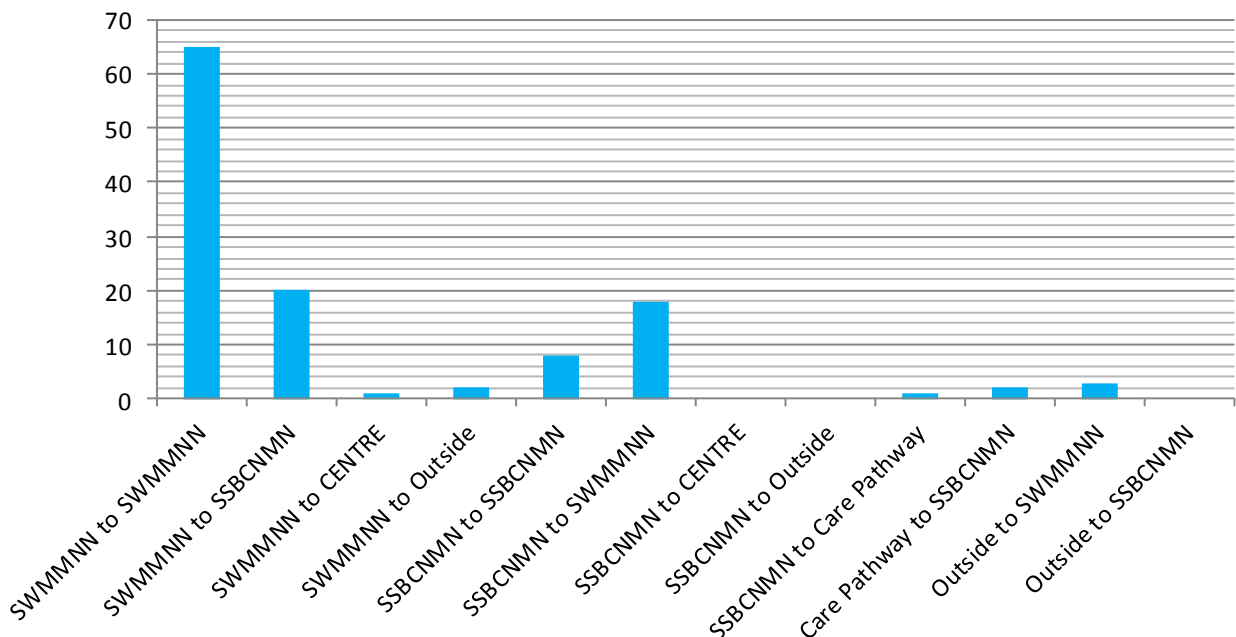


Outside Transfers 2015 vs 2016



Which network are transfers going to and from?

April 2016 Transfers



April 2016

West Midlands Neonatal Transfer Service



Incidents this Month

Type of Incident	Risk Level	Incident Description
<i>Equipment</i>	Low	Ventilator oxygen analyser malfunction
<i>Equipment</i>	Low	Ventilator oxygen cell malfunction
<i>Ambulance</i>	Low	Ambulance unable to start, and clicking noise heard.
<i>Care Withdrawn</i>	Low	Arrived on NNU in preparation to transfer baby. Babies condition deteriorated with continual desaturations despite an increase in oxygen. Following a discussion with ward staff and capacity manager, WMNTS decided to withdraw and cancel transfer due to clinical condition of baby.
<i>Equipment</i>	Low	Both temp probes on incubator 3 reading 0.9 degrees below a manual axilla temp
<i>Equipment</i>	Low	When setting up ventilator, unable to secure vent block. Appeared that large screw that secured block to ventilator didn't fully tighten. Therefore vent block continued to wobble when attached
<i>Equipment</i>	Low	Unable to obtain a trace or reading for ETCO2 monitoring on incubator 1.
<i>Ambulance</i>	Low	Ambulance failure to start
<i>Equipment</i>	Low	BBraun pump 10009 front screen went blank whilst in use, Infusion removed and placed onto different pump, Unable to close arm of pump 10009 and remains blank screen with alarm noted every two minutes.

Staffing

Staffing	Nurses Band 6	Transport SpR (Deanery)	Nurse Consultant Band 8b	Administrator Band 4	ANNP Band 8b	ANNP Band 8a	Transport Consultant
	10 (7.9 WTE)	1	1	1	4 (WTE 4)	2 (WTE 2)	1.5

Additional Notes: *New Band 6 started 1st April. Cot Locator Administrator Band 3 moved over to BCH on 1st April.*