

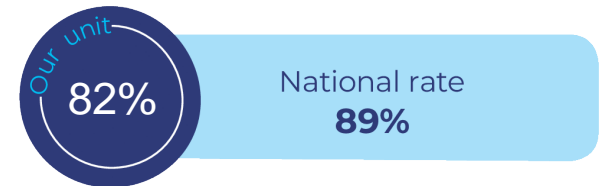
# Your baby's care

## Measuring standards and improving neonatal care

**CITY HOSPITAL, BIRMINGHAM** takes part in the **National Neonatal Audit Programme (NNAP)** which monitors aspects of the care that has been provided to babies on neonatal units in England, Scotland and Wales. This poster shows how the 2017 results for CITY HOSPITAL, BIRMINGHAM compare with national rates, as indicated in the NNAP 2018 Annual Report on 2017 data.

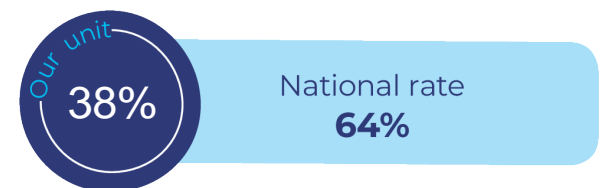
### Antenatal steroids

Mothers who delivered babies between 24 and 34 weeks gestation who were given antenatal steroids. This is recommended to help prevent breathing problems in baby.



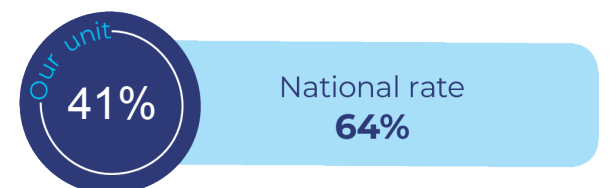
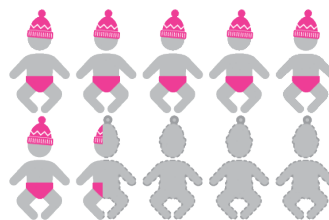
### Antenatal magnesium sulphate

Mothers who delivered babies below 30 weeks gestation who were given magnesium sulphate in the 24 hours before delivery. This is recommended to help prevent cerebral palsy in baby.



### Temperature on admission

Babies born at less than 32 weeks gestation who had an appropriate temperature (between 36.5°C and 37.5°C) on admission to the neonatal unit.



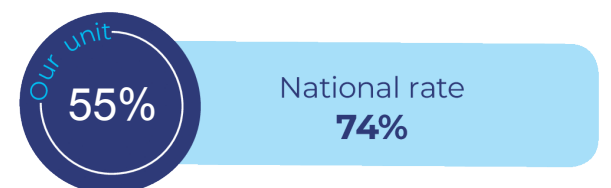
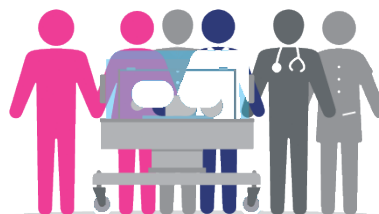
### Consultation with parents

Documented consultation with parents/carers by a senior member of the neonatal team within 24 hours of a baby's admission.



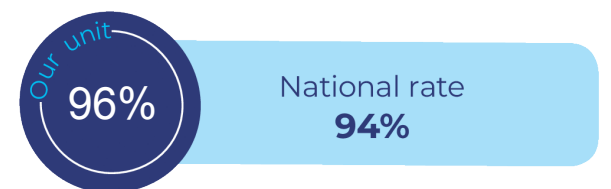
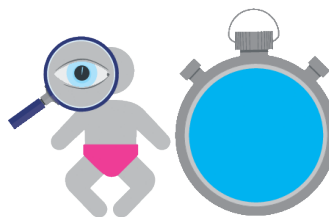
### Parents on ward rounds

The proportion of admissions where parents were present on at least one consultant ward round during a baby's stay.



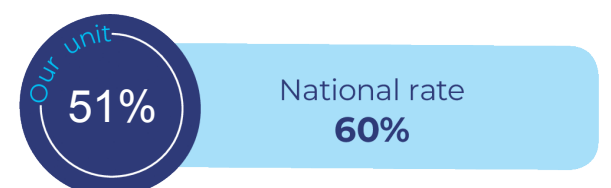
### Screening for retinopathy of prematurity

Babies who are born weighing less than 1501g, or are born at less than 32 weeks gestation who receive on-time screening for retinopathy of prematurity.



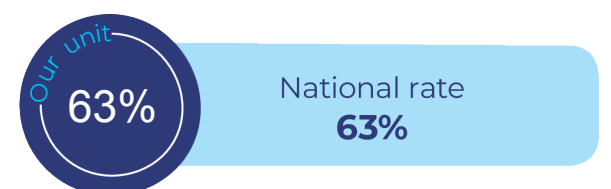
### Mother's milk at time of discharge

Babies born at less than 33 weeks who were receiving some of their mother's milk, either exclusively or with another form of feeding, when they were discharged from neonatal care.



### Follow-up at two years of age

Babies born at less than 30 weeks who had received documented medical follow-up at two years of age.



Please see **Poster 2** for this unit's response to the results.

To find out more about how we use your baby's information, please visit:  
[www.rcpch.ac.uk/nnap](http://www.rcpch.ac.uk/nnap)