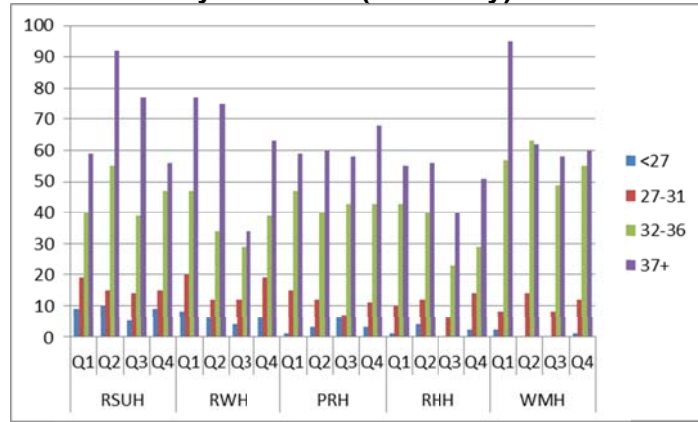
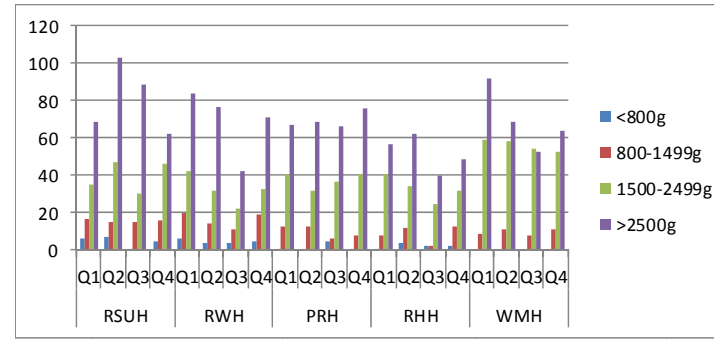


SSBCNMN Activity Report 2015/16- SSBCNMN Admissions 2015/16

Admissions by Gestation (NNU Only)

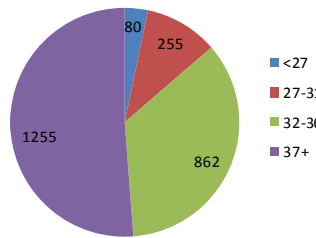


Admissions by Birth weight (NNU Only)



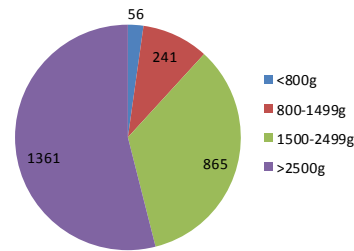
SSBCNMN Admissions to NNU by Gestation

SSBCNMN Annual



SSBCNMN Admissions to NNU by Birth weight

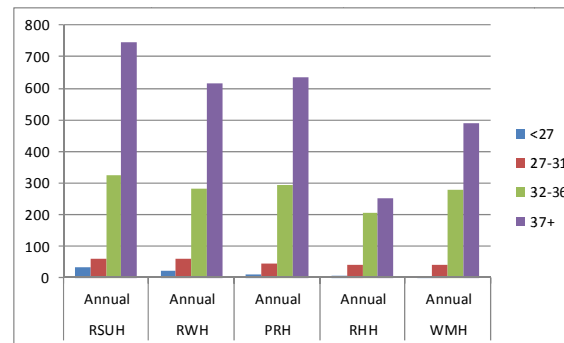
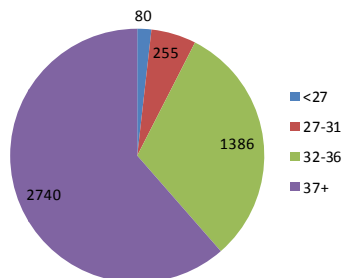
SSBCNMN Annual



Key
 RSUH Stoke
 RWH Wolverhampton
 PRH Telford
 WMH Walsall
 RHH Dudley

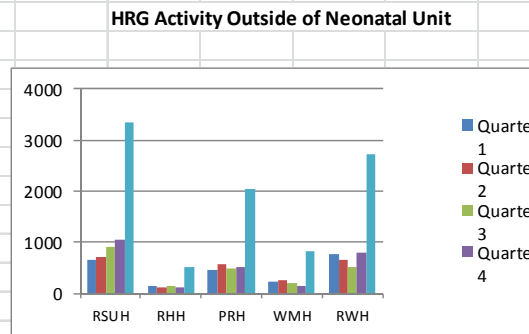
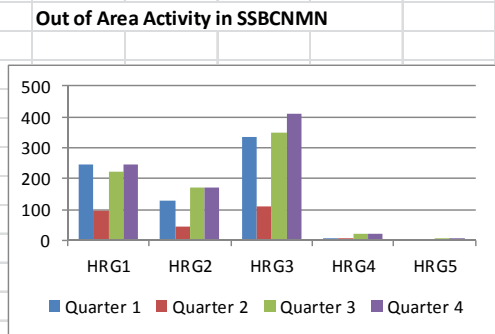
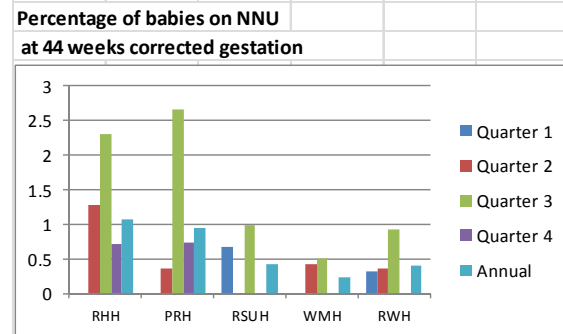
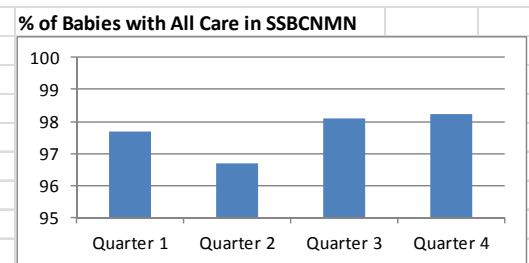
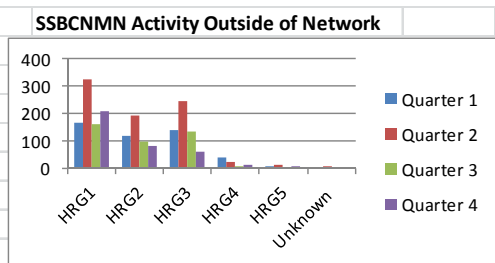
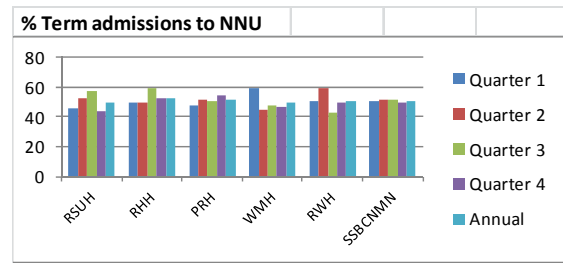
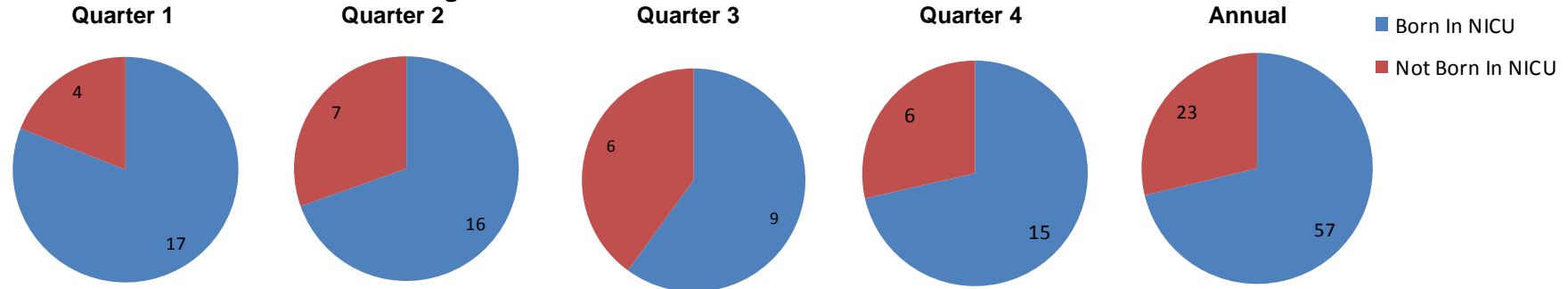
All Admissions (NNU/TC/PNW) by Gestation

SSBCNMN Annual



SSBCNMN Activity Report 2015/16- Location of Care Report 2015/16

Location of Birth babies < 27 Weeks gestation in SSBCNMN



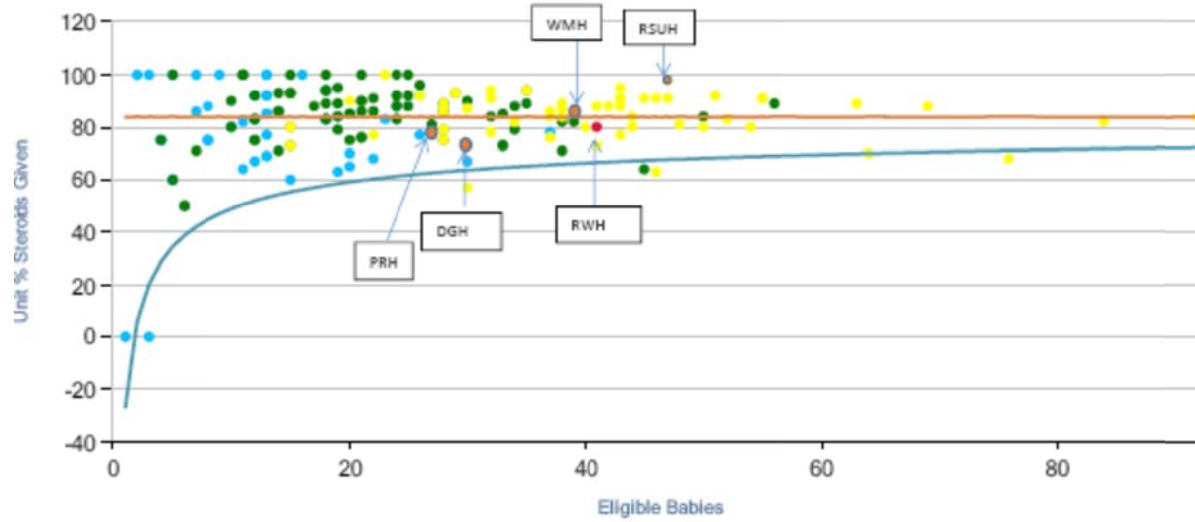
SSBCNMN Outcomes 2015/16

Quarter	Trust	Cooling (network babies)	2 year assessments	Deaths by Gestation						Deaths by Birth Weight							
				24 & under	25 - 27	28 - 31	32- 36	> 37	Total	< 750	750 - 999	1000 - 1499	1500 - 1999	2000 - 2499	> 2500	Total	
Quarter 1	RWH	2	Babies discharged 01/04/12-30/06/12	2	4	0	0	2	8	3	1	2	0	1	1	8	
	RSUH	6		3	1	0	1	0	5	3	1	0	0	0	0	1	5
	PRH	2		0	0	0	0	0	0	0	0	0	0	0	0	0	0
	RHH	1		0	1	0	0	1	2	0	0	1	0	0	0	1	2
	WMH	1		0	0	0	0	0	0	0	0	0	0	0	0	0	0
	Survival			25.0%	75.0%	98.6%	99.7%	99.6%		62.5%	79.2%	95.3%	99.7%		99.6%		
	Totals	12		53	5	6	0	1	3	15	6	2	3	0	1	3	15
Quarter 2	Trust		Babies discharged 01/07/12-30/09/12														
	RWH	5		1	4	0	0	1	6	2	1	2	0	0	1	6	
	RSUH	5		4	3	1	1	1	10	5	3	0	0	0	2	10	
	PRH	2		0	0	0	1	2	3	0	0	0	0	0	3	3	
	RHH	2		0	0	2	0	0	2	0	0	2	0	0	0	2	
	WMH	1		0	0	0	0	0	0	0	0	0	0	0	0	0	
	Survival			66.7%	84.4%	96.9%	99.5%	99.1%		73.3%	88.9%	96.6%	100.0%		99.2%		
Totals	15	54	5	7	3	2	4	21	7	4	4	0	0	6	21		
Quarter 3	Trust		Babies discharged 01/10/12-31/12/12														
	RWH	2		1	1	1	0	0	3	2	0	1	0	0	0	3	
	RSUH	0		0	0	2	0	0	2	0	1	0	1	0	0	2	
	PRH	3		0	1	1	0	0	2	0	1	0	1	0	0	2	
	RHH	0		0	0	0	0	0	0	0	0	0	0	0	0	0	
	WMH	1		0	0	0	1	0	1	0	0	0	0	1	0	1	
	Survival			87.5%	92.9%	93.0%	99.7%	100.0%		88.2%	91.3%	97.8%	99.7%		100.0%		
Totals	6	57	1	2	4	1	0	8	2	2	1	2	1	0	8		
Quarter 4	Trust		Babies discharged 01/01/13 - 31/03/13														
	RWH	3		2	1	2	1	1	7	2	1	2	0	2	0	7	
	RSUH	3		0	1	0	0	1	2	1	0	0	0	0	1	2	
	PRH	1		0	0	1	0	0	1	0	0	1	0	0	0	1	
	RHH	1		0	0	2	0	0	2	0	1	0	1	0	0	2	
	WMH	0		0	0	0	1	0	1	0	0	0	0	1	0	1	
	Survival			83.3%	94.4%	93.8%	99.5%	99.7%									
Totals	8	51	2	2	5	2	2	13	3	2	3	1	3	1	13		

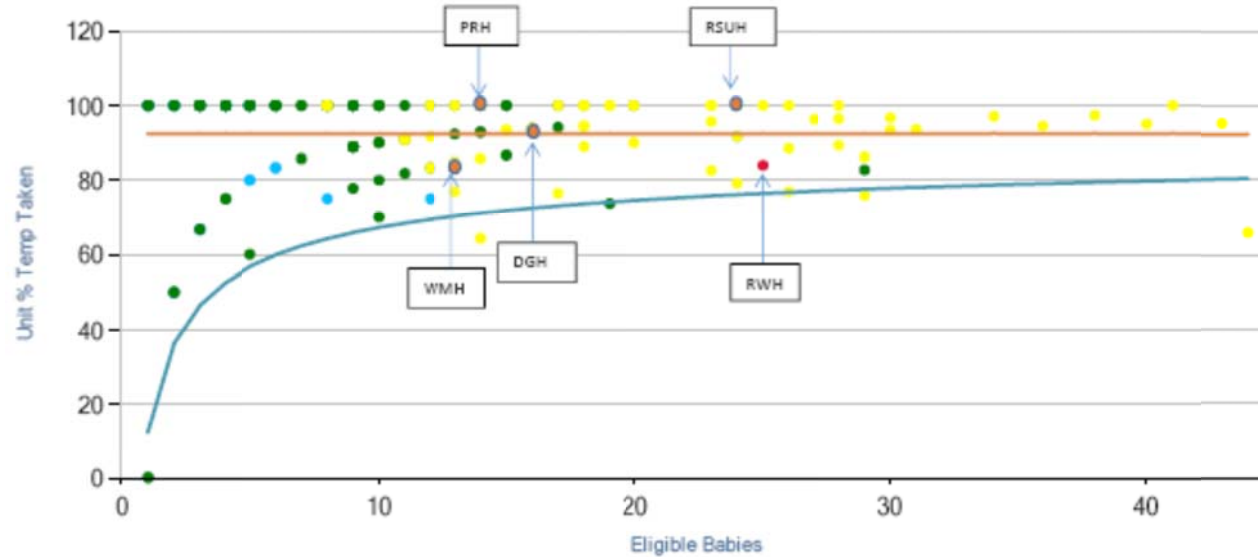
National Neonatal Audit Programme Q4 1 Jan– 31 March 2015/16

● Level 1 Units
 ● Level 2 Units
 ● Level 3 Units
 — LowerLimit
 — Average

Antenatal Steroids

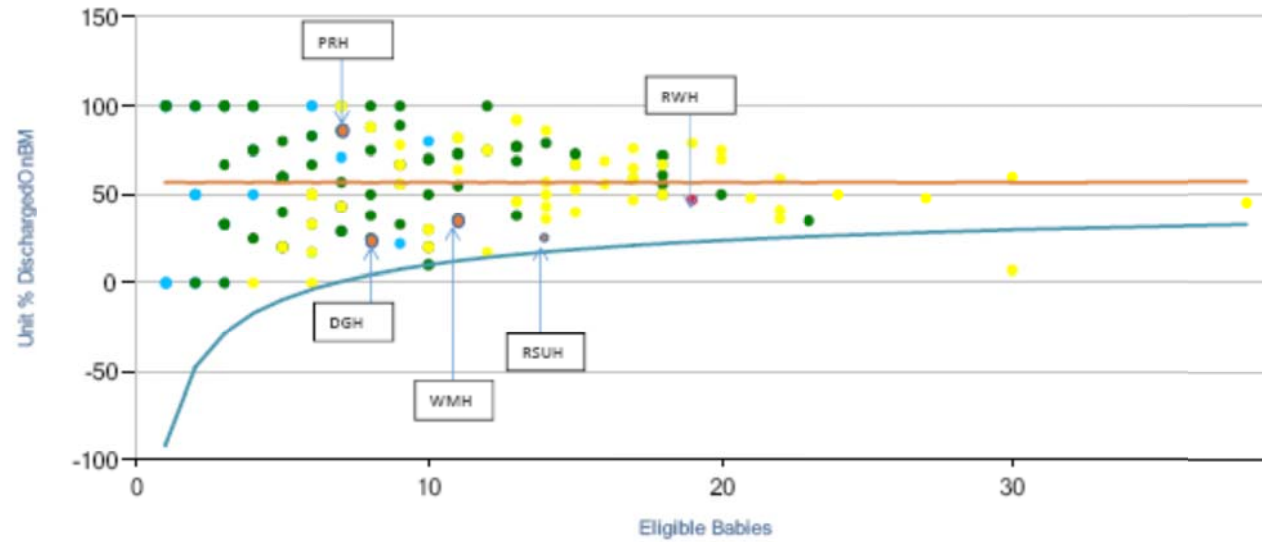


Temperature on Admission

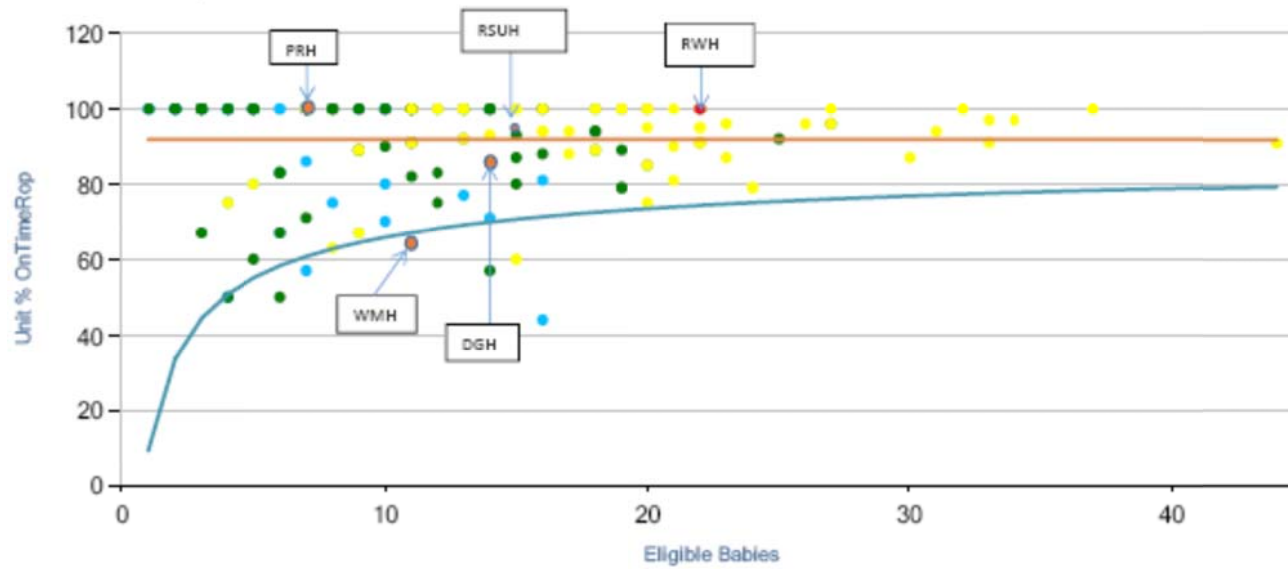


National Neonatal Audit Programme Q4 1 Jan – 31 March 2015/16 continued....

Discharged on Mother's Milk

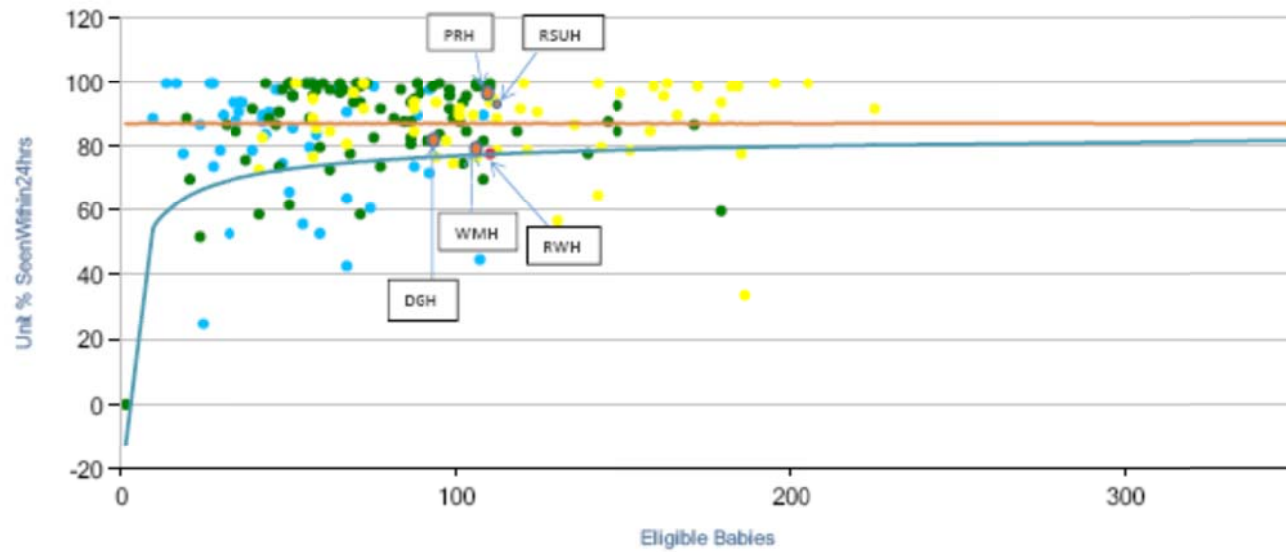


RoP Screening

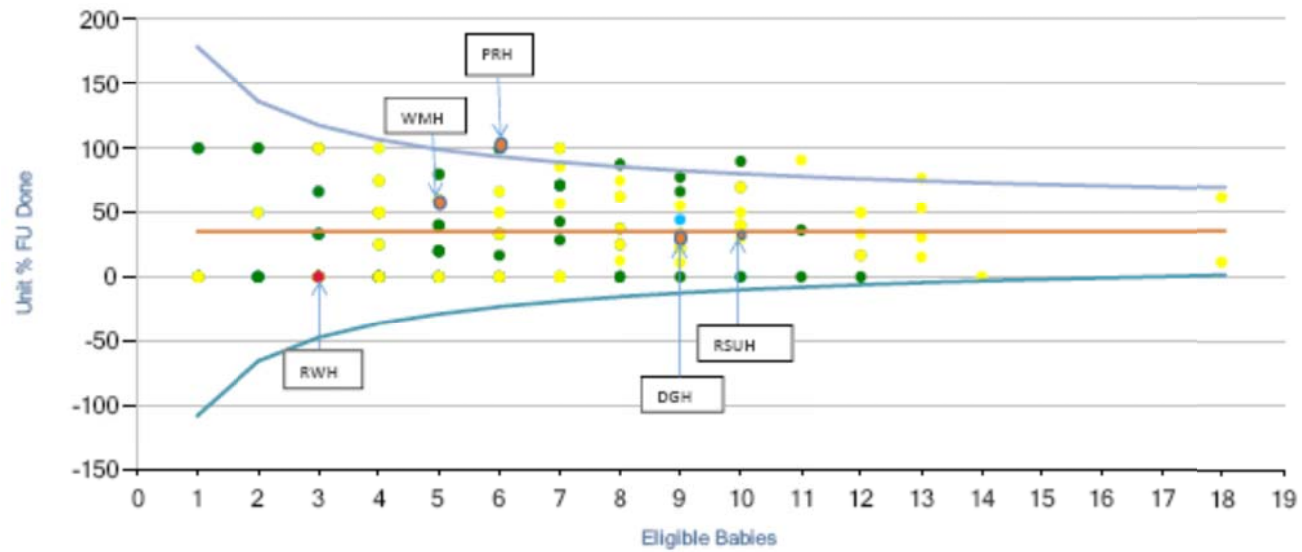


National Neonatal Audit Programme Q4 1 Jan – 31 March 2015/16 continued....

Consultation within 24hours



Two Year Follow Up Performed



Unit Report Exceptions to Care Pathways Q4 1 Jan – 31 March 2015/16

In Utero Exceptions to care pathways

	Trust						
Quarter 4	RWH						
	UHNM	1	NNU Full	33+3	Heartlands	Unknown	
	SaTH	0	N/A	N/A	N/A	N/A	
	DGH	2	No IC Cots in Network X 2	25+4 23+4	Coventry Heartlands	Delivered X 2	
	WMH	10	NNU Full X 9 No IC cots in RWH X 1	31+1 29 36+4 27+2 28+1 35 32 29+3 34	Stoke Stoke Good Hope Stoke Manchester Worcester Worcester Worcester Nuneaton Stoke	Undelivered X 6 Delivered X 4 (Good Hope, Manchester, Worcester X 2)	One had a previous IUT in this pregnancy (27+2 IUT to Stoke)
	Network Total	13 + RWH	NNU Full X 10 No IC Cots in RWH X 1 No IC Cots in UHNM X No IC Cots in Network X 2 + RWH	<27 X 2 27-31 X 6 32-34 X 3 34 X 2 +RWH	Network X 4 West Midlands X 8 Neighbouring Network X Outside X 1 (Manchester)	Delivered X 6 Undelivered X 6 Unknown X 1 +RWH	
SSBCNMN Annual Total	107 + RWH Q4	NNU Closed (Infection) X 1 NNU Full X 79 No IC Cots in RWH X 10 No IC Cots in UHNM X 0 No IC Cots in Network X 17 + RWH Q4	<27 X 26 27-31 X 37 32-34 X 30 > 34 X 13 Unknown X 1 +RWH Q4	Network X 36 West Midlands X 42 Neighbouring Network X 17 Outside X 12 +RWH Q4	Delivered X 17 Undelivered X 27 Unknown X 64 +RWH Q4	1 with Previous IUT in this Pregnancy +RWH Q4	

Ex-Utero exceptions to care pathways Q4 1 Jan – 31 March 2015/16

	Trust						
Quarter 4	RWH	7	Delayed Repatriations X 4 Outside admissions X 3	N/A	4 babies 40 days	3 babies days	52 Delayed repatriations - Telford X 2 babies 9 days total, Mansfield 1 baby x 20 days, Walsall 1 baby x 11 days Outside admissions - B'ham Womens X 1 - 5 days, Mansfield X 1 - 43 days, Lincoln X 1 - 4 days
	UHNM	9	Delayed Repatriations X 5 Outside admissions X 3 Therapeutic Hypothermia X 1	Therapeutic Hypothermia X 1	5 babies 20 days	3 babies days	55 Therapeutic Hypothermia - Transferred to RWH due to over capacity at UHNM Delayed repatriations - Worcester 3 babies 17 days total (1,1,15) B'ham City 1 baby 1 day, Walsall 1 baby 2 days Outside admissions - Worcester 1 baby 39 days, B'ham city 2 babies 16 days total (8 days each)
	SaTH	8	Below gestational/weight threshold X 1 > 48 hours ventilation X 6 Delayed Repatriations X 0 Outside admissions X 0 Therapeutic Hypothermia X 1	Below gestational threshold X 1 > 48 hours ventilation X 6 Therapeutic Hypothermia X 1	0	0	Below gestational threshold - <27/40 discussed with RWH at 1.5hrs old, delayed transfer at 25hrs due to NTS capacity > 48 hours ventilation - 3 were not exceptions as not ventilated >48hrs continuously. 2 babies >48hrs ventilation were discussed with specialists at UHNM / BCH due to other conditions, both were ventilated at SaTH for 5 days each. Therapeutic Hypothermia - discussed with UHNM and RWH at 3 & 4 hrs of age, transferred to RWH at 11 hrs of age
	DGH	18	Below gestational/weight threshold X 2 > 48 hours ventilation X 5 Delayed Repatriations X 4 Outside admissions X 7	Below gestational threshold X 2 > 48 hours ventilation X 5	4 babies 27 days	7 babies 97 days	Below gestational threshold - 25/40 transferred to UHNM, 23/40 transferred to RWH > 48 hours ventilation - one baby ventilated for 53 hrs remained at DGH, 3 babies transferred out when worsening condition (2 to RWH, 1 to UHNM) 1 baby sudden deterioration and pulmonary haemorrhage at 36 hrs and died; Delayed repatriations New cross X 2 babies (twins) 12 days total Walsall 2 babies 15 days total (7,8) Outside admissions Derby 1 baby 5 days B'ham Womens 6 babies 92 days total (28,21,21,4,14,4)
	WMH	6	Below gestational/weight threshold X 0 > 48 hours ventilation X 0 Delayed Repatriations X 1 Outside admissions X 5	N/A	1 baby 1 day	5 babies 113 days	Delayed repatriations Good Hope X 1 baby 1 day Outside admissions Good Hope 1 baby 5 days B'ham Womens 4 babies (Quads) 108 days total (23,25,24,36)
Network Total		48	Below gestational/weight threshold X 3 > 48 hours ventilation X 11 Delayed Repatriations X 14 Outside admissions X 18 Therapeutic Hypothermia X 2	Below gestational threshold X 3 > 48 hours ventilation X 11 Therapeutic Hypothermia X 2	14 babies 88 days	18 babies 317 days	Delayed Repatriations SSBCNMN = 8 Babies 49 days in total West Midlands - 5 Babies 19 days in total Neighbouring Network - 1 Baby 20 days in total Outside Admissions West Midlands - 15 Babies 265 days in total Neighbouring Network - 3 Babies 52 days in total
Annual			Below gestational/weight threshold X 16 > 48 hours ventilation X 31 Delayed Repatriations X 56 Outside admissions X 61 Therapeutic Hypothermia X 3 Over Capacity X 24 Clinical Condition X 3	Below gestational threshold X 16 > 48 hours ventilation X 31 Therapeutic Hypothermia X 3 Clinical Condition X 3	66 babies 534+ days	60 babies 825+ days	Delayed Repatriations SSBCNMN = 36 Babies 394+ days in total West Midlands = 14 Babies 116 days in total Neighbouring Networks = 3 Babies 24 days in total Outside Admissions West Midlands - 50 Babies 674+ days in total Neighbouring Network - 11 Babies 149 days in total

Monitoring Exceptions to Care Pathways – Badger Report Q4 1 Jan – 31 March 2015/16

Badger Unique ID	Care Location Name	Unit Lvl	Criteria	Exception Days	Outcome	CEL / Network Comment
AT35GB	Russells Hall Hospital	LNU	ChestDrain+ventilated	3	Died	28+3, acute deterioration at 36 hours and died - Not an exception.
ARWBLB	Russells Hall Hospital	LNU	Cooling	2	DischHome/Ward	Term, passively cooled only, Not an exception
A21ZKB	Russells Hall Hospital	LNU	Inotropes+ventilated	4	Transferred 97 Hrs	30+0 tranferred from BWH ventilated, remained ventilated and on inotropes at RHH for further 96 hours before transfer out.
AIO6GB	Russells Hall Hospital	LNU	Preterm+LowWeight	2	Transferred 25 Hrs	25+1 ventilated, transferred at 25 hours
AD96GB	Russells Hall Hospital	LNU	Ventilated	3	Transferred 65 Hrs	27+5 extubated at 12 hours, reintubated at 36 hours, transferred <20 hours later - Not an exception.
APIFHB	Russells Hall Hospital	LNU	Ventilated	4	DischHome/Ward	34+0 ventilated <48 hours, Not an exception
A5JOIB	The Shrewsbury and Telford	LNU	ChestDrain+ventilated	3	Transferred 269 Hrs	37+0, ventilated for 5 days, chest drain for 3 days. Discharged to BCH with posterior urethral valves day 11.
AY25KB	The Shrewsbury and Telford	LNU	ChestDrain+ventilated inc	4	DischHome/Ward	31+2, ventilated for 4 days, pneumothorax requiring chest drain
AAHELB	The Shrewsbury and Telford	LNU	Cooling	2	Transferred 11 Hrs	Term baby transferred to cooling centre at 11 hours, Not an exception.
AJQXKB	The Shrewsbury and Telford	LNU	Inotropes+ventilated	2	Transferred 1112 Hrs	28+3 transferred from Hereford at 9 hours, ventilated 2 days Not an exception
AOJLHB	The Shrewsbury and Telford	LNU	Preterm	2	Transferred 26 Hrs	26+0 ventilated 8 hours, transferred at 26 hours to NICU
AE5IJB	The Shrewsbury and Telford	LNU	Ventilated	5	DischHome/Ward	25+5, ventilated 2 days then extubated but reintubated day 14 and transferred to NICU
ALZWKB	The Shrewsbury and Telford	LNU	Ventilated	3	Transferred 117 Hrs	32+6, TF from BWH D2 ventilated ventilated <48 hrs after TF - Not an exception
AVSBHB	The Shrewsbury and Telford	LNU	Ventilated	5	DischHome/Ward	38+0, intubated D6 and ventilated 5 days
A226GB	Walsall Hospital NHS Trust	LNU	Ventilated+inotropes	4	DischHome/Ward	Term, PPHN, ventilated + inotropes 4 days
AYPYHB	Walsall Hospital NHS Trust	LNU	ChestDrain	2	DischHome/Ward	Ventilated <48 hours, chest drain 72 hours. Not an exception
A3LMHB	Walsall Hospital NHS Trust	LNU	Ventilated	3	DischHome/Ward	35+2, ventilated <24 hours total- Not an exception
A954GB	Walsall Hospital NHS Trust	LNU	Ventilated	3	DischHome/Ward	32+4, ventilated for 3 days
ABW4JB	Walsall Hospital NHS Trust	LNU	Ventilated	4	DischHome/Ward	32+6, ventilated <72 hours
AU9QHB	Walsall Hospital NHS Trust	LNU	Ventilated	4	DischHome/Ward	29+0, ventilated <48 hours - Not an exception

Shared Learning from Incidents Reported Q3 1 Oct – 31 Dec 2015

	Trust		
Quarter 3	RWH	3	<p>Large number of accidental intubations noted during network mortality review process. Shared learning; Focussed education and update sessions for medical and nursing staff on ETT placement and fixation. Prompt cards given to trainees covering gestation, length and size of ETT and PEDICAP, Adequate Inflation and Use of Videolaryngoscope.</p> <p>Unexpected admission to NNU. Shared learning; CTG to be reviewed every hour and fresh eyes opinion sought. Documentation of when SpR & SHO assistance is requested. Clear message when requesting assistance ie which delivery room.</p> <p>Respiratory Arrest/Cardiac Arrest post normal Delivery/ MOH/ Maternal Transfer to CCU. Shared learning; Remove unnecessary equipment from delivery room before taking crash trolley in.</p>
	UHNM	TBC	
	SaTH	1	<p>Increased number of babies requiring laser treatment for ROP - 8 SaTH babies required laser therapy between Aug 2015 - March 2016, previous rate has been 0-2 per year. Some babies had shared care on NNUs in RWH, UHNM and HEFT, these units have been informed. Cases are being reviewed and a meeting involving the 4 NNUs, the ophthalmologist and the network lead to review learning from this has been arranged. Findings from the review will be fed back via the QIPP meeting.</p>
	DGH	6	<p>1 Moderate - No shared learning identified to cascade to network</p> <p>5 Near Misses - 2 currently under review, 3 no shared learning identified to cascade to network</p>
	WMH	2	<p>Stillbirth following uterine rupture. Shared learning; Assessment of previous section scar must be undertaken and documented when woman attends triage with abdominal pain. Regular hourly review of CTG recordings and acquiring 2nd opinions, fresh eyes review and escalations of any concerns or unsure. Staff required to keep up to date with CTF training/competence. Maternal and fetal heart rates must be clearly documented in the maternal records. Any concerns should be escalated to senior Midwife/Obstetrician. The possibility of a uterine rupture must be ruled out before commencing syntocinon.</p> <p>Unexpected death of 33+3 week gestation baby. Details reviewed in network mortality meeting. Post mortem showed no signs of sepsis. An inquest is being held the findings from this will be fed back via the network mortality group.</p>
Quarter 3	Network	12 + UHNM	
Quarter 3	NTS Incidents	17 (16 Low and 1 Moderate)	Equipment X 6 Ambulance X 7 Other X 2 Physical X 1 Communication X 1 (Moderate)

Parent Experiences of Neonatal Services 2015/16 - Parent Passport Feedback

Quarter	Trust	I was encouraged to touch, hold & care for my				When all staff spoke to me about my baby's care it				The nurses & doctors involved me in decisions				All staff cleaned their hands (either with soap and				I would recommend this neonatal unit to a friend or				I felt well prepared to take my baby home			
		Strongly Agree	Agree	Disagree	Strongly Disagree	Strongly Agree	Agree	Disagree	Strongly Disagree	Strongly Agree	Agree	Disagree	Strongly Disagree	Strongly Agree	Agree	Disagree	Strongly Disagree	Strongly Agree	Agree	Disagree	Strongly Disagree	Strongly Agree	Agree	Disagree	Strongly Disagree
Quarter 1	RWH	24	5	0	0	21	8	0	0	22	7	0	0	24	5	0	0	26	3	0	0	28	1	0	0
	UHNM	16	0	0	0	14	2	0	0	13	3	0	0	15	1	0	0	Not available				13	2	0	0
	SaTH	13	0	0	0	13	0	0	0	10	3	0	0	13	0	0	0	13	0	0	0	13	0	0	0
	DGH	8	0	0	0	7	1	0	0	6	2	0	0	8	0	0	0	8	0	0	0	8	0	0	0
	WMH	10	3	1	0	10	4	0	0	10	3	1	0	12	2	0	0	12	2	0	0	11	3	0	0
Network Total		71	8	1	0	65	15	0	0	61	18	1	0	72	8	0	0	59	5	0	0	73	6	0	0
Quarter 2	RWH	18	0	0	0	16	2	0	0	18	0	0	0	18	0	0	0	17	1	0	0	18	0	0	0
	UHNM	8	3	0	0	9	2	0	0	7	4	0	0	10	1	0	0	9	2	0	0	10	1	0	0
	SaTH	7	1			5	3			5	3			8				8				8			
	DGH	24	2			24	2			23	3			25	1			25	1			25	1		
	WMH	24	2			24	2			23	3			25	1			25	1			25	1		
Network Total		57	6	0	0	54	9	0	0	53	10	0	0	61	2	0	0	59	4	0	0	61	2	0	0
Quarter 3	RWH	15	0	0	0	15	0	0	0	13	2	0	0	15	0	0	0	15	0	0	0	13	2	0	0
	UHNM	6	0	0	0	6	0	0	0	6	0	0	0	6	0	0	0	N/A	0	0	0	5	1	0	0
	SaTH	15	1	0	1	14	3	0	0	13	4	0	0	16	1	0	0	17	0	0	0	14	3	0	0
	DGH	5	0	0	0	4	1	0	0	5	0	0	0	5	0	0	0	5	0	0	0	5	0	0	0
	WMH	5	0	0	0	4	1	0	0	5	0	0	0	5	0	0	0	5	0	0	0	5	0	0	0
Network Total		41	1	0	1	39	4	0	0	37	6	0	0	42	1	0	0	37	0	0	0	37	6	0	0
Quarter 4	RWH	15	0	0	0	15	0	0	0	13	2	0	0	15	0	0	0	15	0	0	0	14	1	0	0
	UHNM	Not Available																							
	SaTH	10	1	0	0	10	1	0	0	10	1	0	0	11	0	0	0	10	1	0	0	10	1	0	0
	DGH																								
	WMH																								
Network Total																									

Parent App Feedback –

No New Parent Feedback via App Since Jan 2016