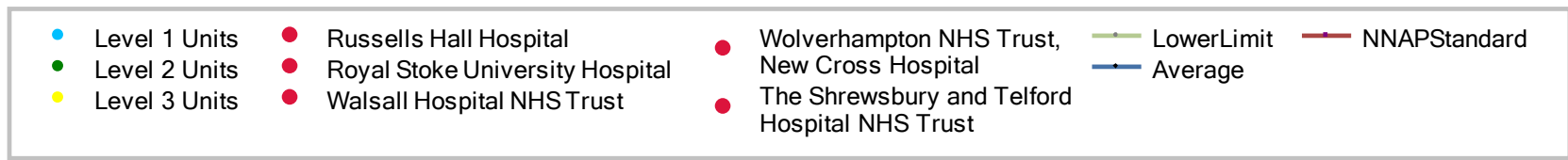
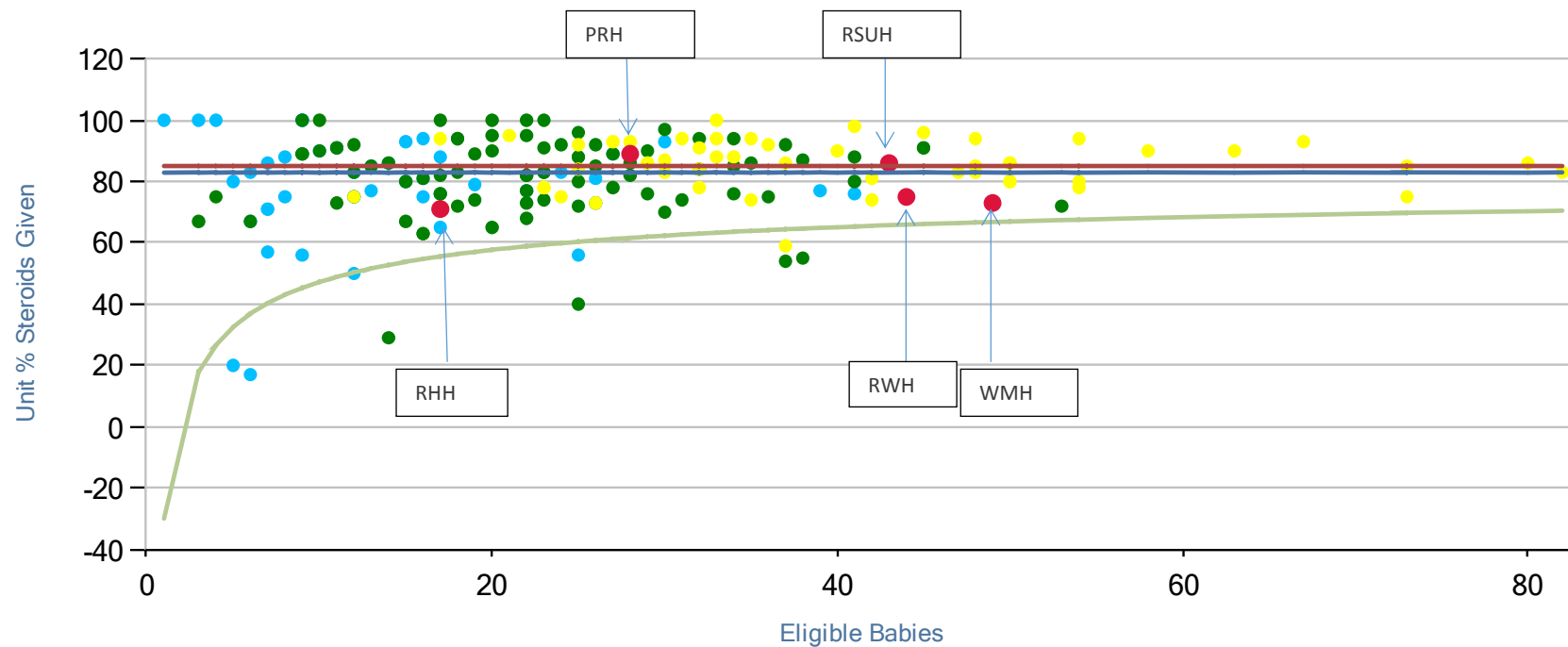
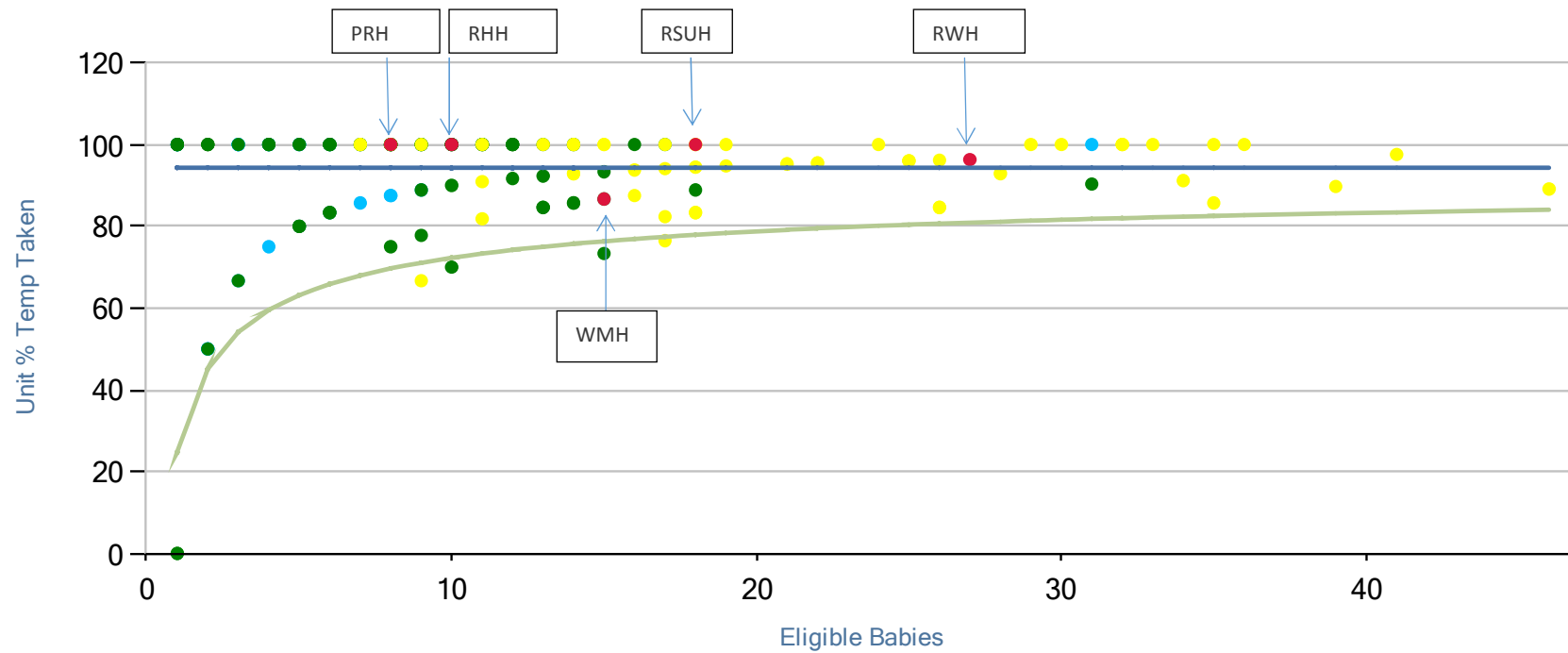


## NNAP - Antenatal Steroids (Network)

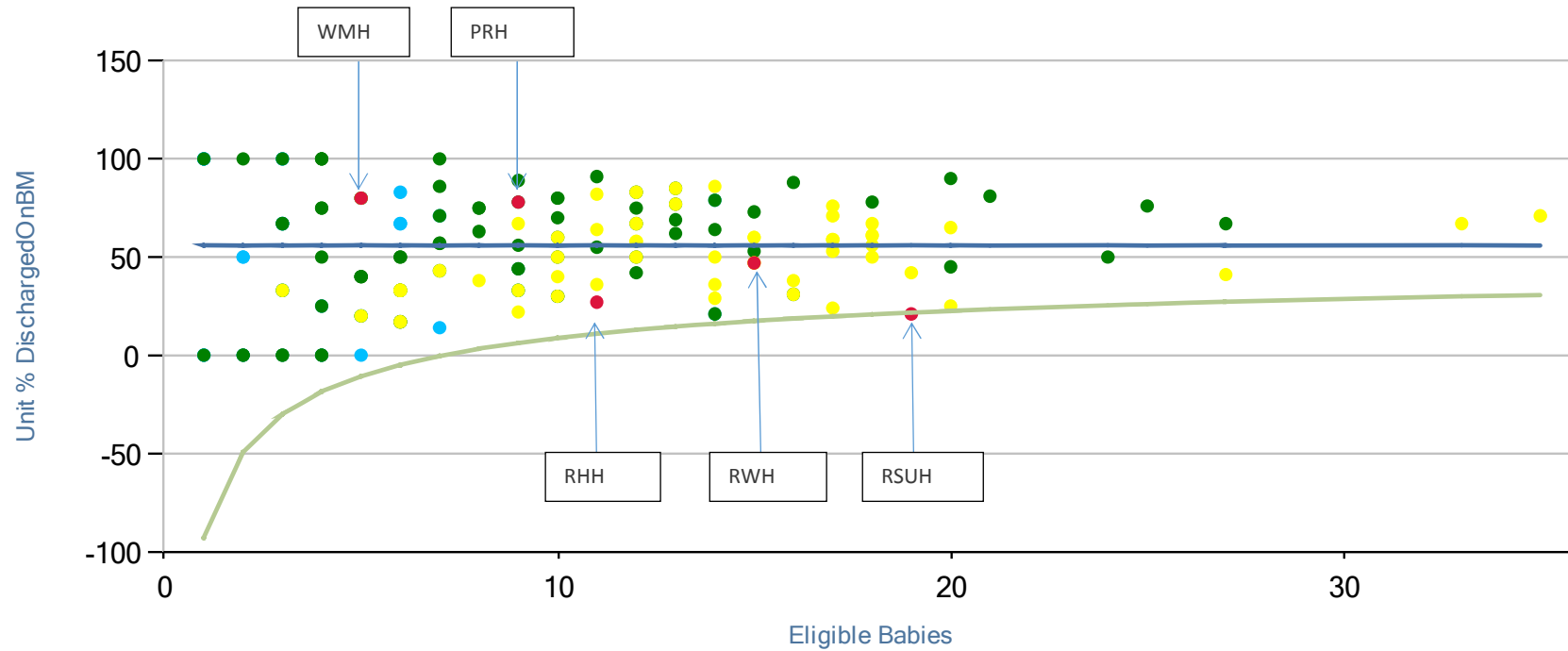


# NNAP - Temperature on Admission (Network)



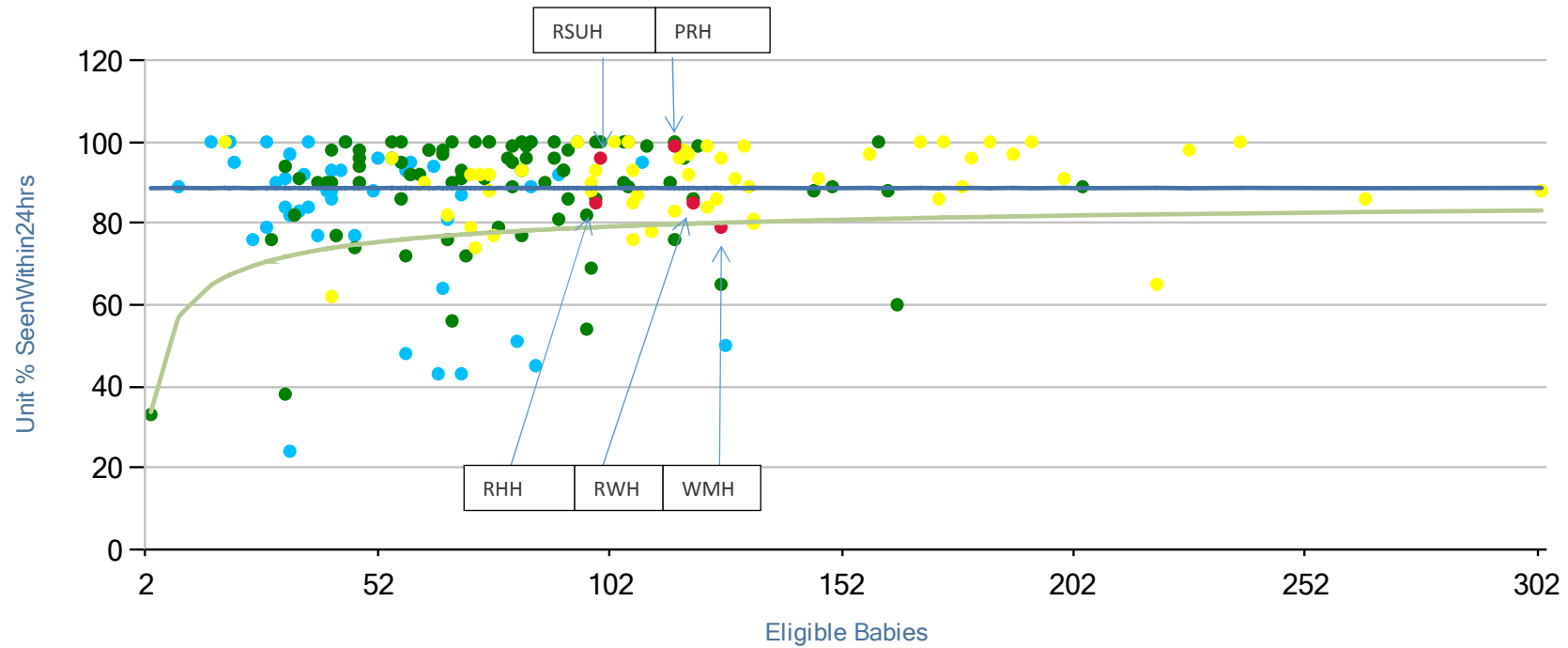
- |                 |                                   |   |              |
|-----------------|-----------------------------------|---|--------------|
| ● Level 1 Units | ● Russells Hall Hospital          | ● Wolverhampton NHS Trust, New Cross Hospital   | — LowerLimit |
| ● Level 2 Units | ● Royal Stoke University Hospital | ● The Shrewsbury and Telford Hospital NHS Trust | — Average    |
| ● Level 3 Units | ● Walsall Hospital NHS Trust      |   |              |

# NNAP - Discharged on Mother's Milk (Network)



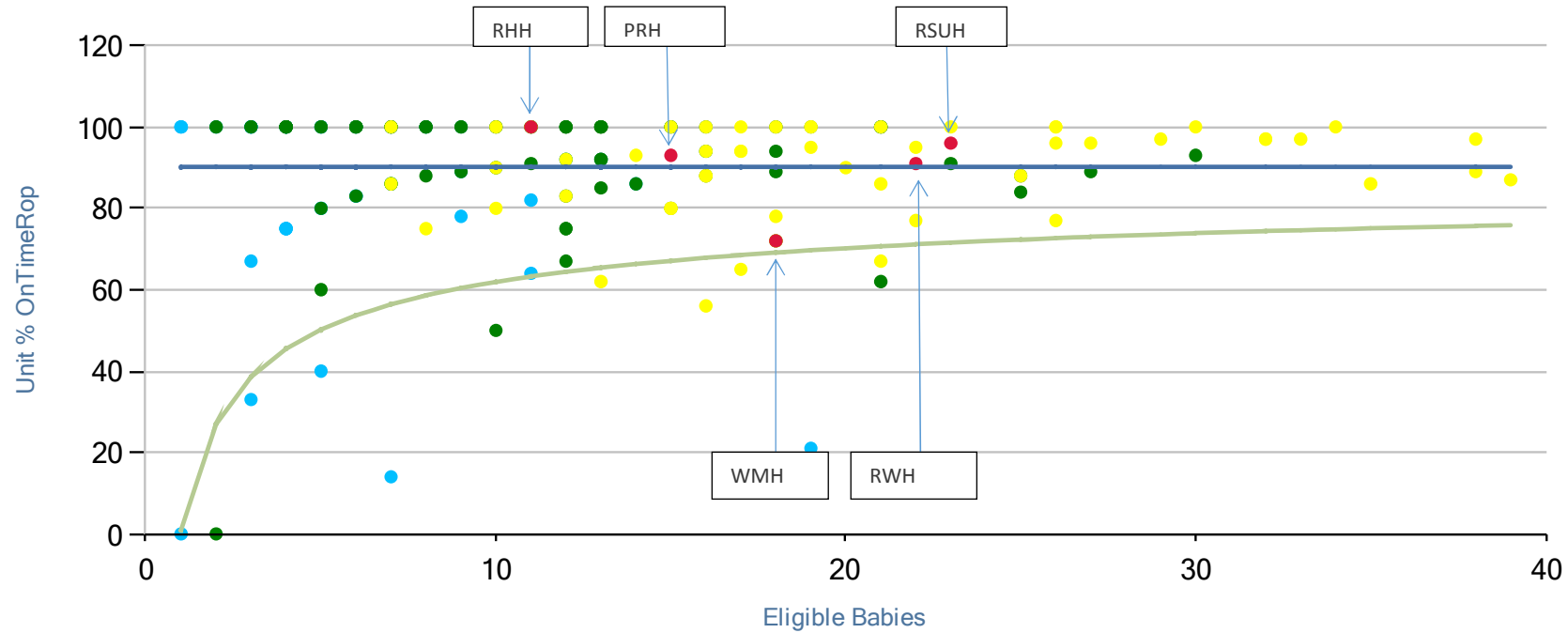
- |                 |                                   |   |              |
|-----------------|-----------------------------------|---|--------------|
| ● Level 1 Units | ● Russells Hall Hospital          | ● Wolverhampton NHS Trust, New Cross Hospital   | — LowerLimit |
| ● Level 2 Units | ● Royal Stoke University Hospital | ● The Shrewsbury and Telford Hospital NHS Trust | — Average    |
| ● Level 3 Units | ● Walsall Hospital NHS Trust      |   |              |

# NNAP - Consultation within 24hours (Network)



● Level 1 Units	● Russells Hall Hospital	● Wolverhampton NHS Trust, New Cross Hospital	— LowerLimit
● Level 2 Units	● Royal Stoke University Hospital	● The Shrewsbury and Telford Hospital NHS Trust	— Average
● Level 3 Units	● Walsall Hospital NHS Trust		

# NNAP - RoP Screening (Network)



- |                 |                                   |   |              |
|-----------------|-----------------------------------|---|--------------|
| ● Level 1 Units | ● Russells Hall Hospital          | ● Wolverhampton NHS Trust, New Cross Hospital   | — LowerLimit |
| ● Level 2 Units | ● Royal Stoke University Hospital | ● The Shrewsbury and Telford Hospital NHS Trust | — Average    |
| ● Level 3 Units | ● Walsall Hospital NHS Trust      |   |              |

# NNAP - Two Year Follow Up Performed (Network)

