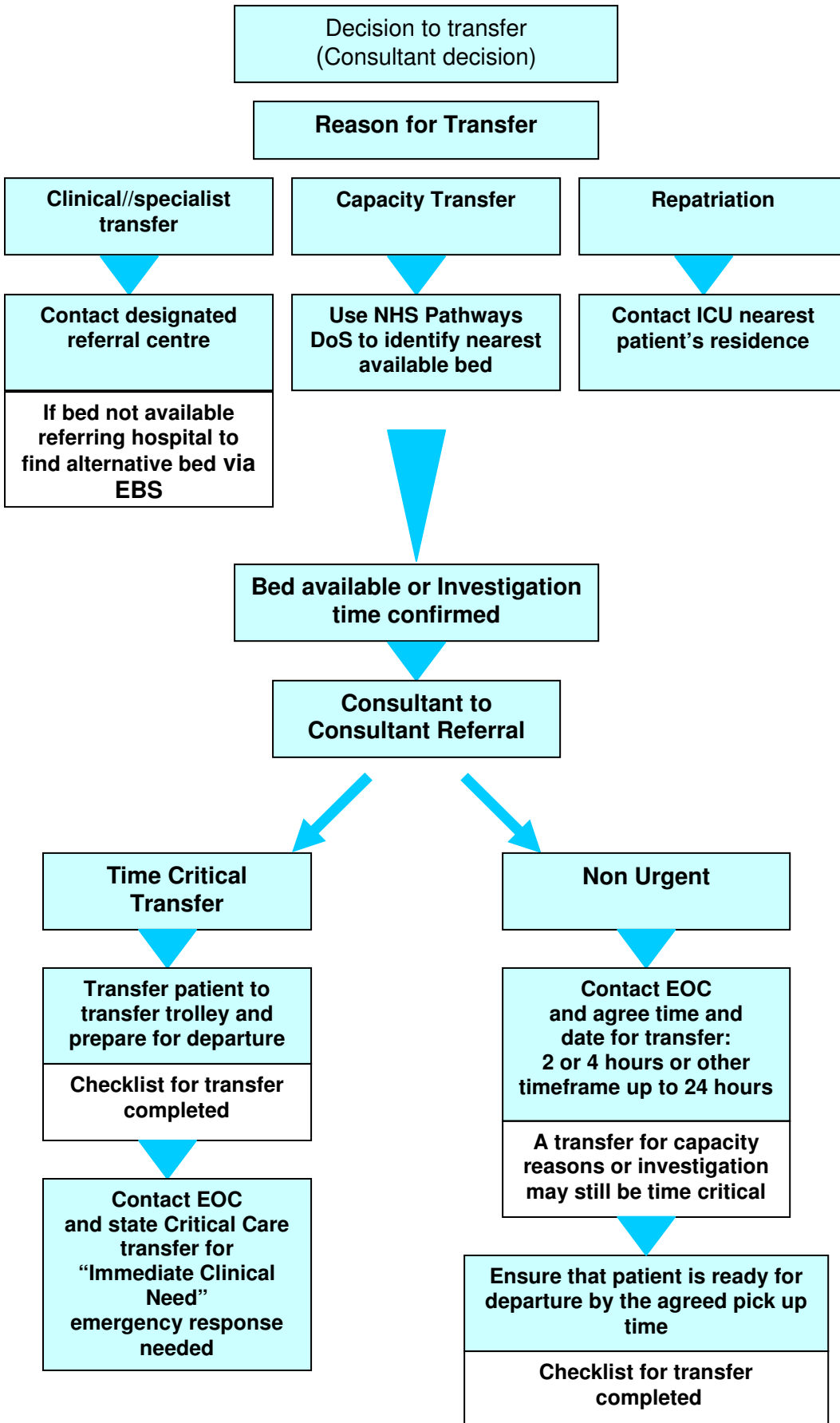




**Pre Transfer Stage**



**Glossary & Phone**

**EOC** Emergency Operations Centre at SECamb

**EOCM** EOC Manager

**Kent & Medway**  
01622 747464  
**Surrey**  
0208 786 8874  
**Sussex**  
01273 486465

**EBS** Emergency Bed Service  
0207 407 718

**NHS Pathways Directory of Services**  
[www.pathwaysdos.nhs.uk](http://www.pathwaysdos.nhs.uk)

**EOC Checklist**

- Urgency and pick up time
- Referring doctor
- Confirm destination
  - Hospital & location
- Name & DOB of patient
- Stability of patient
- Fully prepared/ready to travel?
- Intubated/ventilated?
- Weight of patient
- Special equipment or requirements of patient
  - Intra-aortic balloon pump in situ
- Details of escorting team
- Details of accompanying relatives
- Confirm ETA

**Recommended equipment for transfer**

- Portable ventilator
- Portable monitor
- Electrical inverter/spare batteries
- Portable suction
- Transfer bags, drugs
- Vacuum mattress (if available)
- Spare oxygen cylinder