

Refining the RA pathway to deliver NICE compliant access to treatment

Claire Jones, Rheumatology Biologics Pharmacist

Wye Valley NHS Trust

January 2019

NICE guidance on biologic drugs for the treatment of rheumatoid arthritis (May 2013)

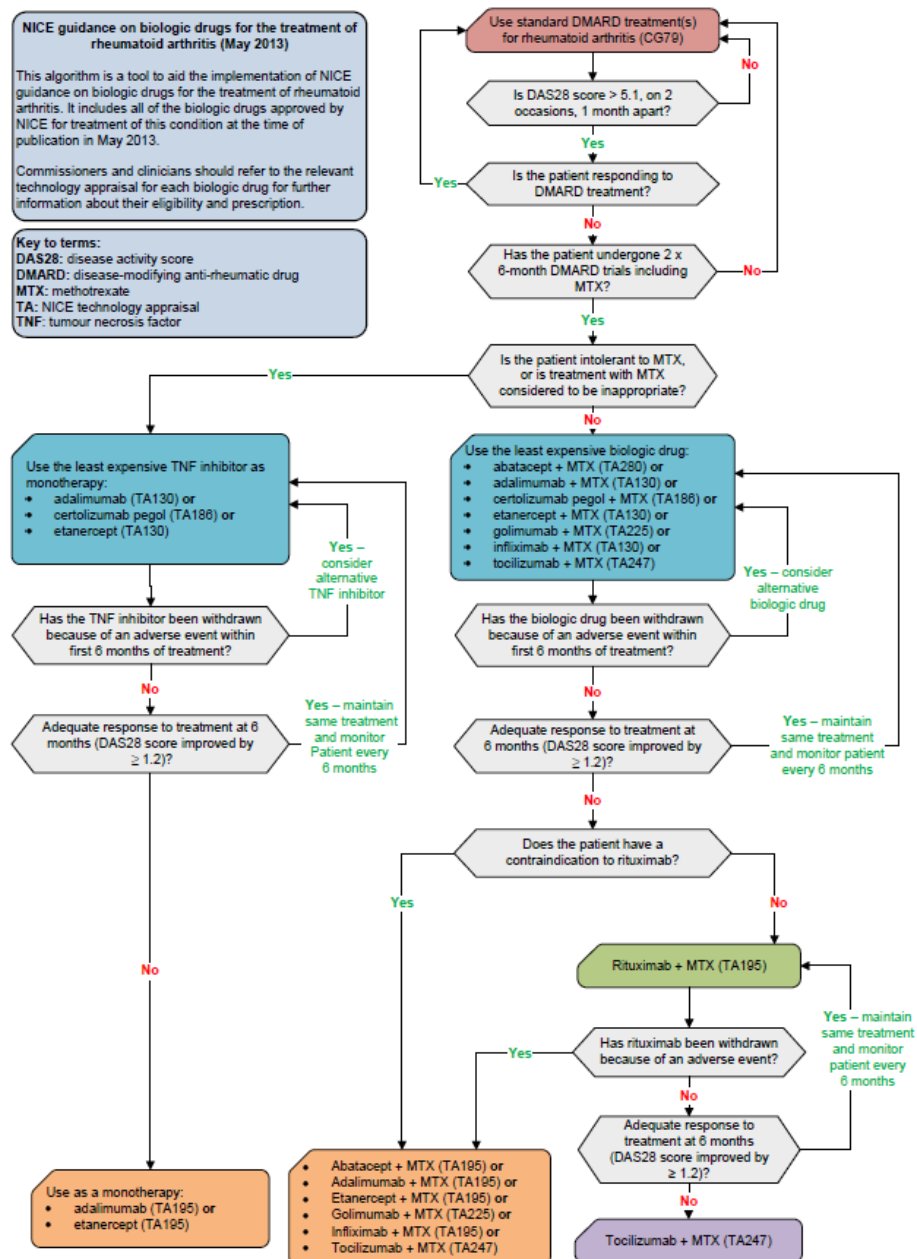
NICE guidance on biologic drugs for the treatment of rheumatoid arthritis (May 2013)

This algorithm is a tool to aid the implementation of NICE guidance on biologic drugs for the treatment of rheumatoid arthritis. It includes all of the biologic drugs approved by NICE for treatment of this condition at the time of publication in May 2013.

Commissioners and clinicians should refer to the relevant technology appraisal for each biologic drug for further information about their eligibility and prescription.

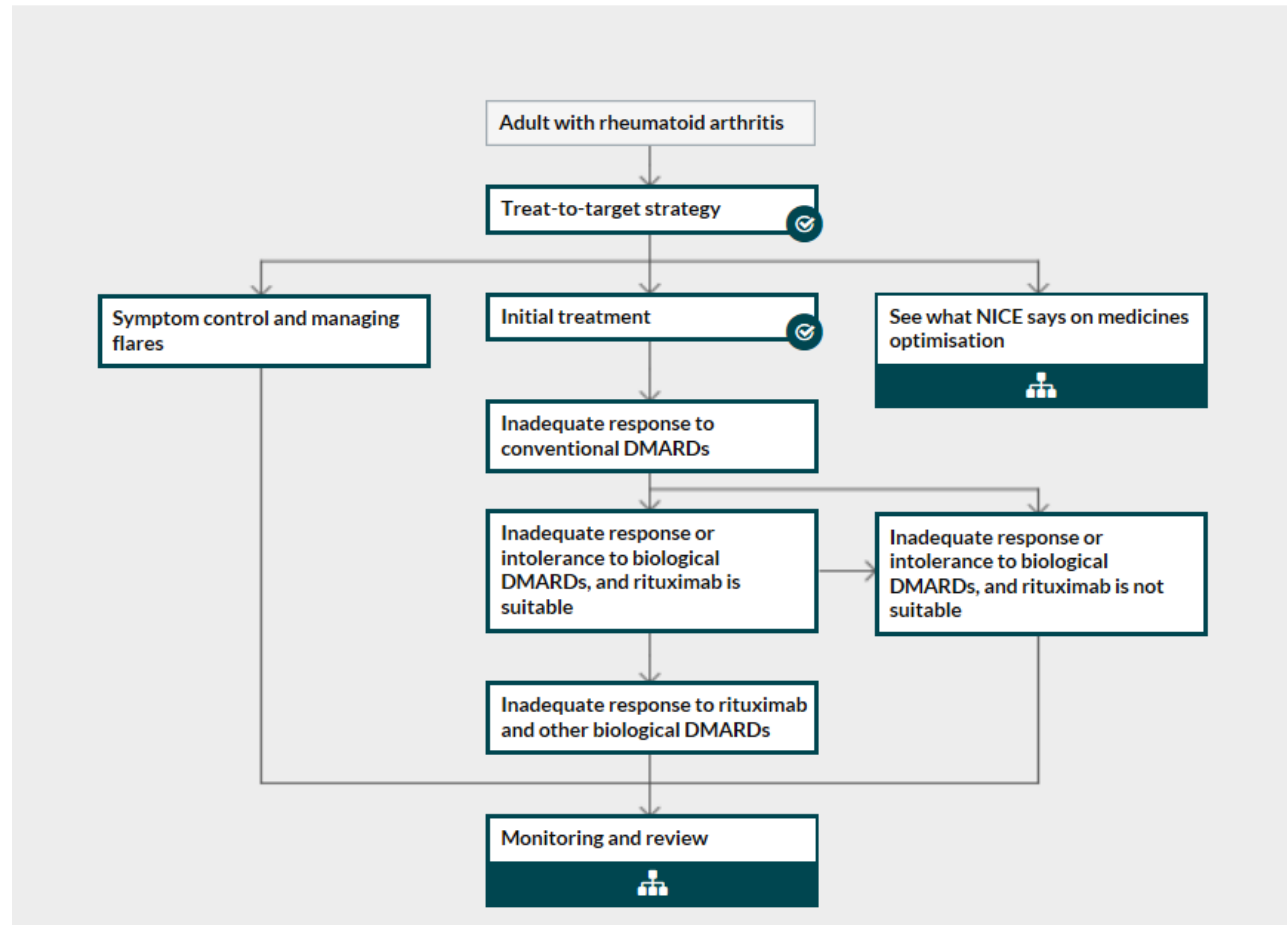
Key to terms:

DAS28: disease activity score
 DMARD: disease-modifying anti-rheumatic drug
 MTX: methotrexate
 TA: NICE technology appraisal
 TNF: tumour necrosis factor



NICE: Drug treatment for rheumatoid arthritis (July 2018)

Drug treatment for rheumatoid arthritis



The problem with increased treatment options...

- Growing patient numbers
- Capacity – staffing
- Homecare dependence
- Which medication to choose?
- The infinite pot of money...

Is it possible to refine the pathway?

Considerations:

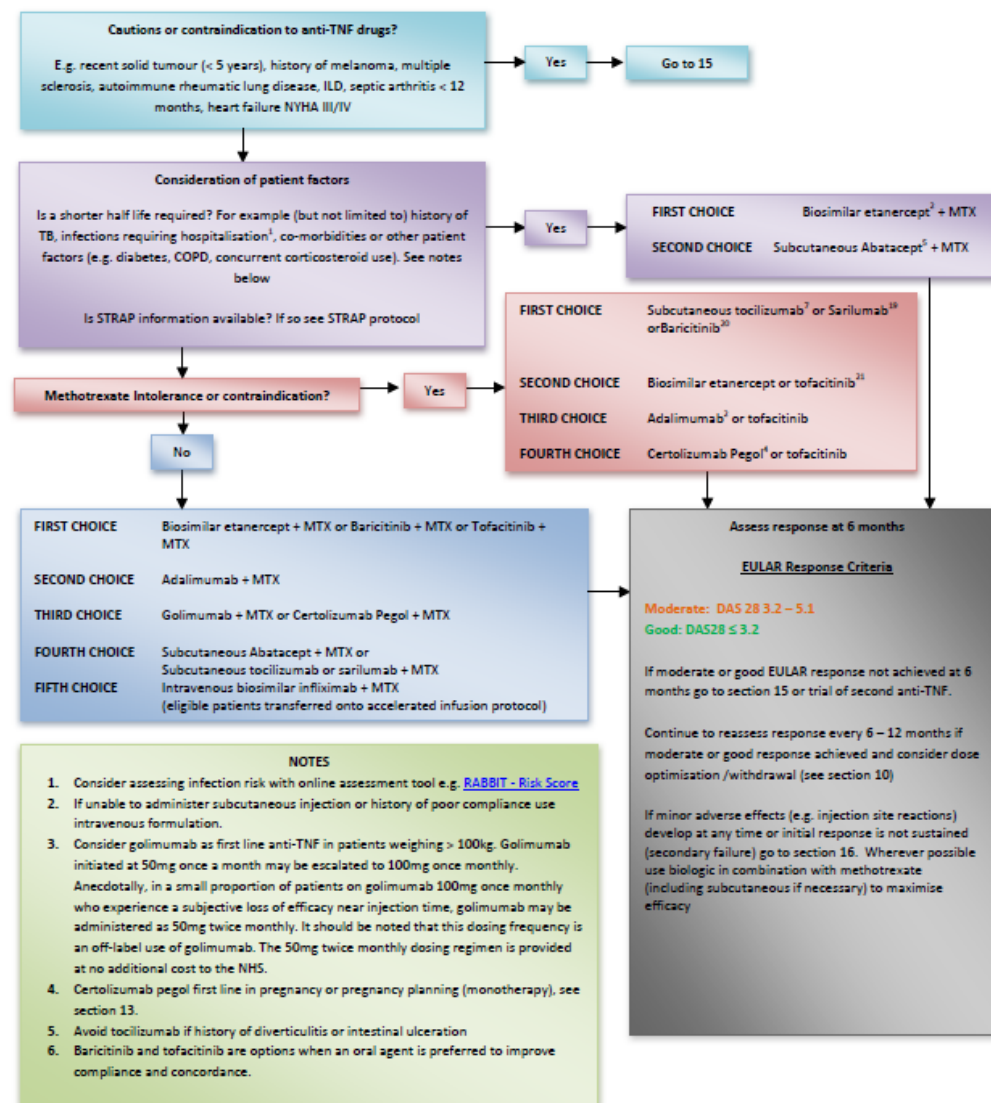
- Mode of action
- Co-morbidities
- Practicalities
 - Patient adherence
 - IV v's SC
- Prescriber/clinician opinions
- Cost
- Biosimilars.



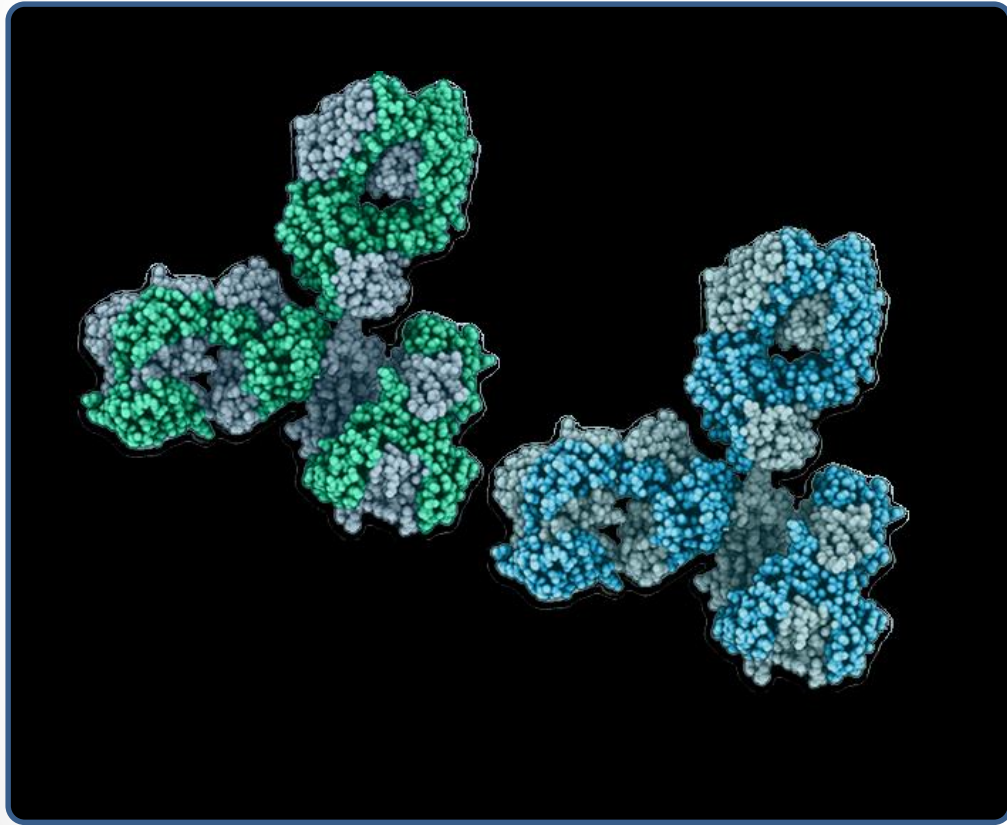
Example pathway

Credit: SE London APC

14. Initiation of first biologic



Regional biosimilar use



- Biosimilars
- Citrate v's citrate-free adalimumab
- Clinician opinion
- Patient opinion.

Local problems... and solutions



- Commissioning statement
- Biologic pharmacist medication initiation and switch clinics
- Increased homecare support
- Biologics meeting.

To do...



- Update local guideline to include a flow-chart and additional, supporting information in text
- Homecare support
- Clinicians to be aware of all treatment options
- Educate commissioner and pharmacy managers.

Questions?

