

ChaMPs Public Health Network

An introduction



Working towards a healthier Cheshire and Merseyside

ChaMPs Public Health Network builds partnerships to promote and protect health and well-being between primary care trusts, local authorities, NHS trusts and wider organisations



ChaMPs Public Health Network is building partnerships in Cheshire and Merseyside between primary care trusts, local authorities, NHS trusts and wider organisations to promote and protect public health and well-being, and develop capacity and capability in the public sector.

For more information visit our website at www.champs-for-health.net or contact Viv Martindale at the network support team on vivienne.martindale@wirralpct.nhs.uk

ChaMPs Public Health Network
St Catherine's Hospital
2nd Floor
Admin Block
Church Road
Birkenhead
CH42 0LQ

Tel: 0151 488 7776
Fax: 0151 488 7735

Welcome to

An overview of Cheshire and Merseyside

ChaMPs Public Health Network serves a population of 2.4 million people, over a geographical area of 1,150 square miles. The area is a mix of urban and rural economies.

There are eight primary care trusts (PCTs) of which five are or are part of "spearhead" communities facing some of the most difficult health challenges nationally. Life expectancies are five years less than the England and Wales average and in some cases as much as 10.

There are 18 NHS trusts, including NHS foundation trusts. Local authority partners include one county council, two city councils and 11 borough councils.

The ChaMPs network

ChaMPs Public Health Network was launched in March 2003 and named CHeshire And Merseyside PartnershipS (ChaMPs) for Health in recognition of the fact that improving health requires effective partnership working, particularly between the NHS and local authorities.

Its key functions are:

1. Maximising the sharing of expertise and use of specialist knowledge while minimising duplication of effort
2. Capitalising on members' knowledge and experience to influence health improvements and tackle inequalities

3. Developing innovative approaches and enhancing the public health evidence base
4. Enabling public health specialists to meet their accreditation needs through a continuing professional development (CPD) programme, and providing a forum for peer support

The network can be defined as groups of public health professionals and wider practitioners, working together across organisations and structural boundaries, who have a common agenda to promote health and well-being and reduce inequalities.

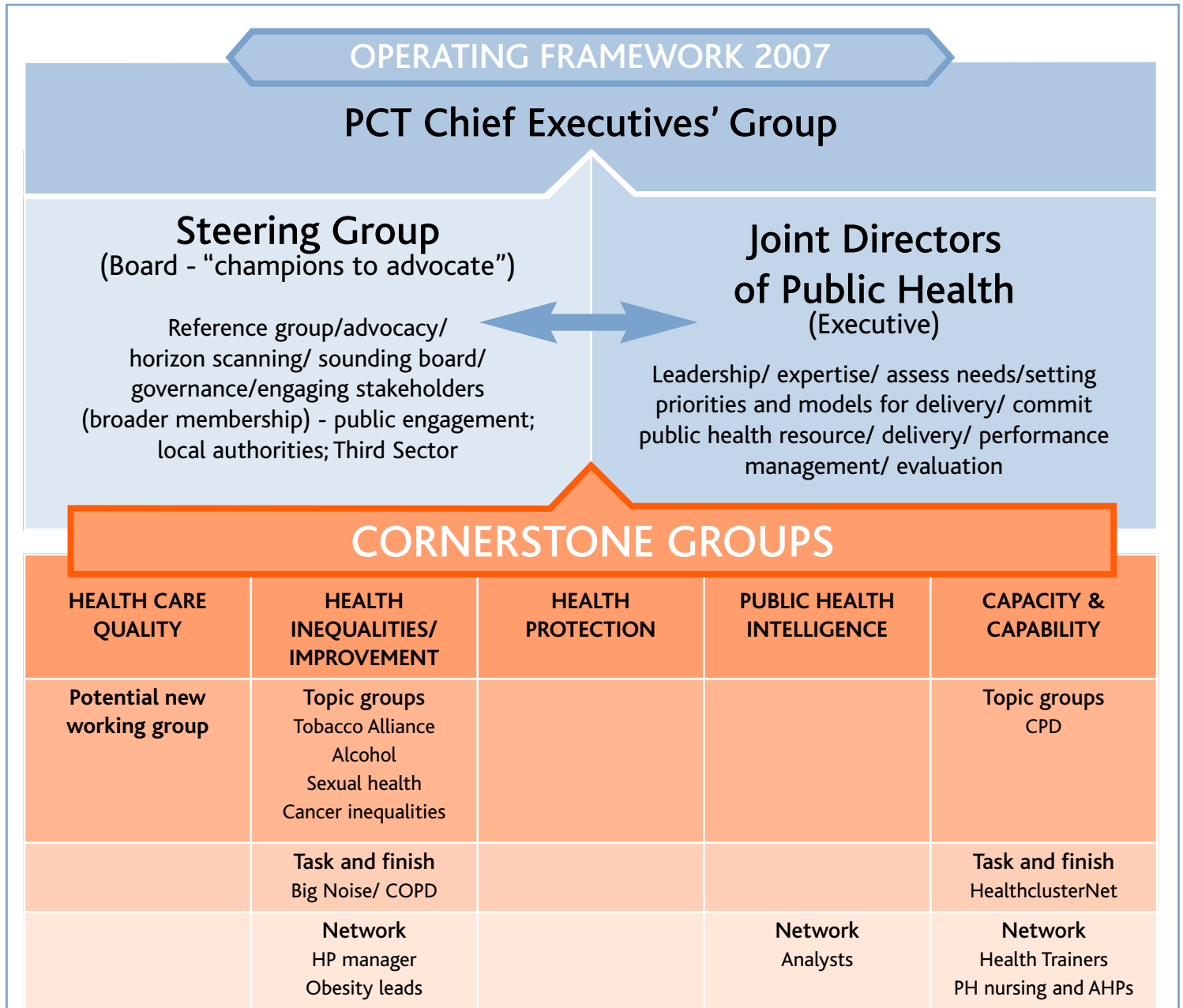
Network leadership

The Directors of Public Health (DsPH) in Cheshire and Merseyside operate as a federation to maximise their capacity to promote and protect health, and reduce inequalities.

The DsPH reviewed the structure of ChaMPs following a period of NHS system reform in 2006 to ensure the network develops. This included a review of the network working groups, and proposing changes in the roles of the DsPH group and ChaMPs Steering Group to ensure they work effectively as leaders within the new ChaMPs operating framework (February 2007).

The DsPH group and steering group produce annual business plans, informed by the network's three-year strategy.

ChaMPs Public Health



Leadership for health gain

The Cornerstone Groups lead the work streams and act as a reference point for the other related groups and networks. They are accountable to the Directors of Public Health

group and a Steering Group made up of NHS, local authority, Health Protection and academic professionals. The network is performance managed by the

Cheshire and Merseyside primary care trust chief executives' group whose organisations fund the network.

Network

Communications

Effective communications and enabling the sharing of best practice are critical to the network. A communications strategy for the ChaMPs Public Health Network was published in March 2006. Its overarching aim is "a planned and sustained effort to establish and maintain goodwill and mutual understanding between ChaMPs and its stakeholders to deliver health gain". The strategy has four goals:

1. Promoting the purpose, activities and benefits of the ChaMPs network to deliver health gain while developing and maintaining a strong network identity
2. Engaging stakeholders and members in such a way that they become involved in the network and know they can influence it
3. Facilitating the sharing of best practice and learning
4. Developing effective external communications

These goals are supported by the active involvement of the membership, a weekly e-Bulletin, a newsletter and a network website.



The support team... Viv, Dawn and Tony

ChaMPs support team

The role of the support team is to be an interface between different agencies and to build consensus between partners, providing a centralised point for co-ordination and facilitation of network activities.

Providing this "boundary spanner" role for the network requires "significant network management skill in articulating the strategies and links between organisations that are robust enough to endure, legitimate enough to become accepted, yet flexible enough to change over time" (*Key lessons for network management in health care – Department of Health, 2005*).

Want to know more

Dawn Leicester, network coordinator
Tel: 0151 488 7776
Mobile: 07887 556841
dawn.leicester@wirralpct.nhs.uk

Tony Ellis, communications manager
Tel: 0151 488 7776
Mobile: 07771 993454
tony.ellis@wirralpct.nhs.uk

Viv Martindale, events, administrator
Tel: 0151 488 7776
vivienne.martindale@wirralpct.nhs.uk

Network strategy 2005-08

A three-year strategy was launched in January 2005 outlining aims and objectives, the related work programme and expected outcomes. The initial five priorities were:

1. **Education/CPD:** to support individuals and organisations to maintain and develop knowledge, skills and attributes which are required for effective professional practice
2. **Health inequalities:** to provide a forum for actively promoting the sharing of evidence and best practice in tackling health inequalities
3. **Health protection:** to involve health protection partner agencies in setting out a strategic direction and promoting opportunities for joint work and sharing good practice to protect public health
4. **Public health intelligence and knowledge management:** to provide a strategic direction for the development of public health intelligence across the network and propose a mechanism by which this knowledge can be managed for the benefit of the network
5. **Workforce development:** to develop the public health workforce capacity and capability in Cheshire and Merseyside to deliver improvements in the health of the population and address inequalities



Action, delivery, achievement

ChaMPs Public Health Network delivered a wide range of significant achievements during 2006/07. Here are just a few of them with some of the network's personalities. For further details, please see our 2007/08 Business Plan.

1 Speakers at the ChaMPs conference in Chester attended by 182 people. From the left, Steve Maddox (Chief Executive, Wirral Council, and ChaMPs steering group co-chair), Paul Lincoln (Chief Executive, National Heart Forum), Ruth Hussey (North West Director of Public Health), Sir David Henshaw (chair, NHS North West) and Cllr Gideon Ben-Tovim (chair, Liverpool PCT).



2 Prof Sir Liam Donaldson (Chief Medical Officer for England) speaking at *Achieving world class standards in public health*, a ChaMPs-inspired event for providers and commissioners held in partnership with the Healthcare Commission and NHS North West.

3 Facilitators of the ChaMPs-funded *Eating the elephant* event who shared best practice in health promotion among nearly 100 colleagues.



4 Marie Armitage (joint Director of Public Health, Wirral PCT, and chair of ChaMPs Directors of Public Health group) and Dr John Reid, (Director, Cheshire and Merseyside Health Protection Unit) at the ChaMPs conference.

5 Julie Webster (Associate Director of Public Health, Western Cheshire PCT) and Helen Lowey (Public Health Specialist, Wirral PCT) with statistician David Lloyd, from the Information Centre for Health and Social Care, at a ChaMPs CPD events, *Intelligence to support practice-based commissioning*.

6 A poster from ChaMPs Catch Your Breath social marketing campaign around COPD conducted with Dr Foster Intelligence; one of ChaMPs numerous professional publications from 2006/07, *Top tips for healthier hospitals*; the conference edition of the ChaMPs News newsletter.

7 Leigh Griffin (Chief Executive, Sefton PCT), the new co-chair of the ChaMPs steering group.





Tel: 0151 488 7776

St Catherine's Hospital, 2nd Floor, Admin Block, Church Road, Birkenhead CH42 0LQ

Web: www.champs-for-health.net